

Filtering and Sorting

Starting with SQL Inventory Manager 2.6 you can now use advanced filtering and sorting options on all the instances views.

Sorting

The different instances views in SQL Inventory Manager allow sorting data by one column data. To sort the listed instances, expand the drop down menu next to the column name you want to use as sorting criteria and select either **Sort Ascending** or **Sort Descending**.

Download Add Auto Register Discover Advanced Filter				
<input type="checkbox"/>	SQL Server	▼	Instance Type	Version
<input type="checkbox"/>	CMWIN8X86-S6	↑ A Z	Sort Ascending	SQL Se
<input type="checkbox"/>	DEVWIN10X64	↓ A Z	Sort Descending	SQL Se
<input type="checkbox"/>	CWF-AUTO	Columns	►	SQL Se
<input type="checkbox"/>	CMWIN7X86-S3	Filters	►	N/A
<input type="checkbox"/>	DESKTOP-H2V08UL	Private		N/A

Alternatively click a column name to sort either in ascending or descending order.

Filtering



SQL Inventory Manager only uses either quick or advanced filters. For example, selecting advanced filtering will clear any applied quick filter.

Quick Filtering

You can find the quick filtering options on the left side of the Instances view. These options will help you get a quick view of your required instances; for example, if you want to see your managed instances filtered by a specific Owner, just choose the respective option from the Owner filter.

Creating a useful filter to "weed out" unnecessary information takes time but is important when managing large environments. As a result, you may want to save that filter for future use. SQL Inventory Manager now allows you to save filters for use in the Explorer and Instances views. Simply create the filter, and then click **Save favorite**, depending on which view you are in when creating the filter. To use that filter, click **Load favorite**.

You can enable or disable the option **Apply filter as it changes** depending if you want to see the changes as you apply the filter, or if you prefer to select your filters first and see the results when you finish.

Filtering columns by name

<input type="checkbox"/>	SQL Server ↓		Status	Server/Instance/DB ...	Version
<input type="checkbox"/>	WIN16DBMIRROR2	↑ A Z Sort Ascending	Virtual	SQL Se	
<input type="checkbox"/>	WIN10X64-SQL14	↓ A Z Sort Descending	Virtual	SQL Se	
<input type="checkbox"/>	WIN-UQITD93V9AC\SQL	Columns	<input checked="" type="checkbox"/> SQL Server		
<input type="checkbox"/>	SQLCMTEST\SQL2014	<input type="checkbox"/> Filters	<input checked="" type="checkbox"/> Actions		
<input type="checkbox"/>	SQLCMTEST	Up	<input checked="" type="checkbox"/> Status		
<input type="checkbox"/>	SQL-HYPERV\SQL 2008R2	Up	<input checked="" type="checkbox"/> Server/Instance/DB Type		

To have a more compact and relevant view you can filter out columns from the instances views. To filter out columns by name follow these instructions.

1. Click ▼ next to a column name.
2. Go to **Columns**.
3. Click the checkbox next to the column name you want to filter out.

Filtering by column value

Version		Edition	# of DBs	Size (MB)
SQL Server 2016 F	↑ A Z Sort Ascending	..	9	261.6
SQL Server 2014 F	↓ A Z Sort Descending	..	16	954.1
SQL Server 2014 F	Columns	..	14	604.2
SQL Server 2014 F	<input type="checkbox"/> Filters			
SQL Server 2012 S...	Enterprise Edition.	<input type="checkbox"/> SQL Server 2016 RTM (13.0.1601.5)		
SQL Server 2016 R...	Enterprise Edition.	<input type="checkbox"/> SQL Server 2014 RTM (12.0.2000.8)		
SQL Server 2016 C...	Enterprise Evaluat.	<input type="checkbox"/> SQL Server 2012 SP2 (11.0.5058.0)		
		<input type="checkbox"/> SQL Server 2016 CTP 3.3 (13.0.1400.361)		

You can also filter instances using column values as filtering criteria. To filter out columns by value follow these instructions.

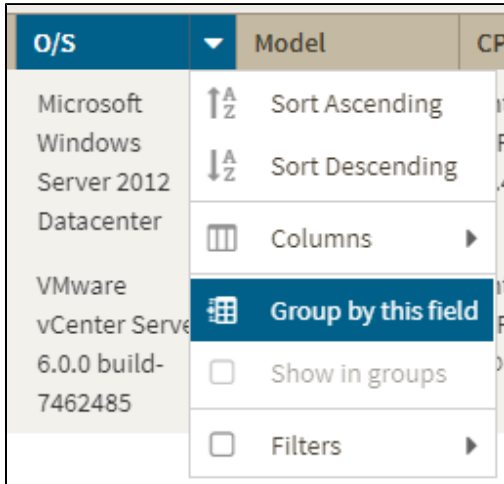
1. Click ▼ next to a column name.
2. Go to **Filters**.
3. Click the column value you want to use as filtering criteria.

Grouping Columns

The Managed by Host Server and SQL Licensing by Server views allow you organize instances by grouping them according to column names.

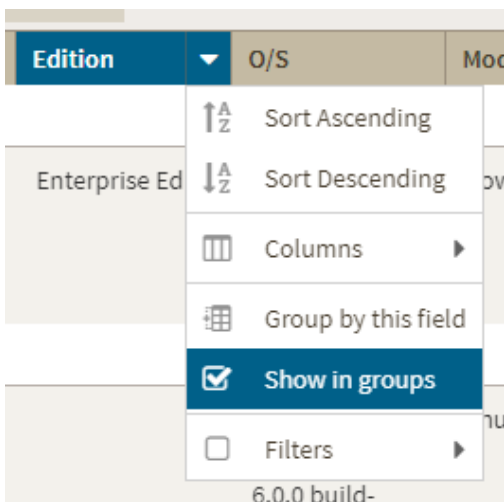
To group instances by column name follow these instructions.

1. Click ▼ next to a column name you want to use as group criteria.
2. Select **Group by this field**.



To ungroup instances follow these instructions.

1. Click ▼ next to a column name.
2. Uncheck **Group by this field**.



Advanced Filtering

The **Advanced Filter** option on the actions bar allows you to create, save, and apply advanced filters. The advanced filtering options use both the criteria on the quick filters and all the available data column to create custom filters. To create an advanced filter click **Advanced Filter** and select **Create Filter**.

The Advanced Filters dialog in IDERA SQL Inventory Manager has the following structure:

The screenshot shows the 'Advanced Filters' dialog box. At the top, there's a title bar with a close button. Below it, a subtitle reads 'Create custom filters that allow you segment instances using single or multiple conditions.' A 'Custom Filter Name:' label is followed by a text input field (callout 1) and a 'Help' link. Below this is a 'Filters Field' (callout 2) containing a row of controls: a dropdown for column name, a dropdown for operator, a date picker icon, a time picker icon, a dropdown for logical operator (currently 'AND'), and a minus icon. At the bottom, there are three buttons: 'Add Filter' (callout 3), 'Clear Filters' (callout 4), and a group of three buttons: 'Cancel' (callout 5), 'Apply Filters without Saving' (callout 6), and 'Save and Filter' (callout 7).

1. **Custom Filter Name** - Enter a name for your custom filter.
2. **Filters Field** - Allow you to setup filtering criteria.
3. **Add Filter** - Allow you to add an additional filter.
4. **Clear Filters** - Clears the value of filter creation fields.
5. **Cancel** - Cancels the creation of the filter.
6. **Apply Filters without Saving** - Applies the current advanced filter without saving it.
7. **Save and Filter** - Saves and applies the filter.

The **Filters Field** contains the following elements:

This diagram shows a detailed view of the 'Filters Field' with labels for its components. It consists of four main parts: a dropdown menu labeled 'Column Name', a dropdown menu labeled 'Operator', a text input field labeled 'Column Value', and a dropdown menu labeled 'Conditional' (which currently shows 'AND'). A minus icon is located to the right of the 'Conditional' dropdown.

Column Name - The column name used as filtering criteria, like Instance or SQLServer Version.

Operator - Compares the value on its left with the value on its right.

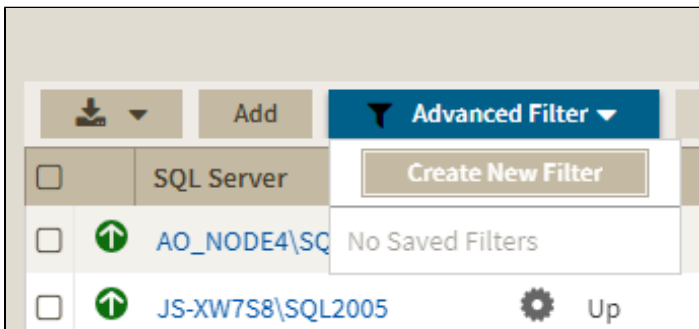
Column Value - The value to be used as filtering criteria.

Conditional - Conditional statements that determine additional filtering options. Available options are **AND**, **OR**, and **NOT**.

Creating Advanced Filters

To create an advanced filter follow these instructions:

1. Go to the instance view where you want to create a filter.
2. Click **Advanced Filter** and select **Create New Filter**.



3. On the **Advanced Filters** dialog enter a name for your filter.

 A screenshot of the 'Advanced Filters' dialog. It has a text input field labeled 'Custom Filter Name:' with the value 'Filter_1' entered. There is a 'Help' link to the right of the field.

4. Use the drop down menus to select your desired criteria on the filter creation field.

 A screenshot of the filter creation field. It consists of three main parts: a dropdown menu with 'Version' selected, a dropdown menu with 'Contains' selected, and a text input field with 'SQL Server 20...' entered. To the right of the input field is an 'AND' dropdown menu and a minus sign icon.

5. Click Save and Filter

You can also use conditions to further refine your advanced filters


You can also use further conditions to refine your advanced filters. To add more filtering fields click **Add Filter** and choose an operator.

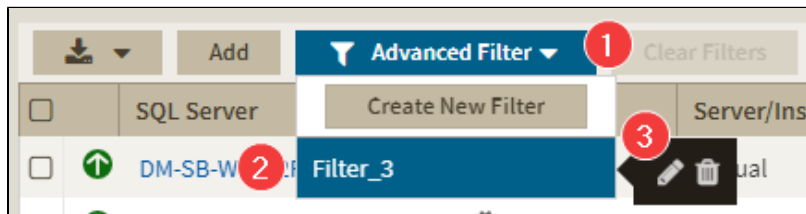
 A screenshot of the filter creation field showing two conditions. The first condition is 'Status' contains 'Down'. The second condition is 'Location' contains 'Prod_Lab'. Both conditions are separated by an 'AND' operator. There are minus sign icons to the right of each condition.

To remove a filter field click  .

Editing Advanced Filters


To edit a filter go to an instance view and follow these instructions:

1. Click Advanced Filter.
2. Go to the filter you want to edit.
3. Click on the edit option .



Deleting Advanced Filters

To delete a filter go to an instance view and follow these instructions:

1. Click Advanced Filter.
2. Go to the filter you want to delete.
3. Click on the delete button .

