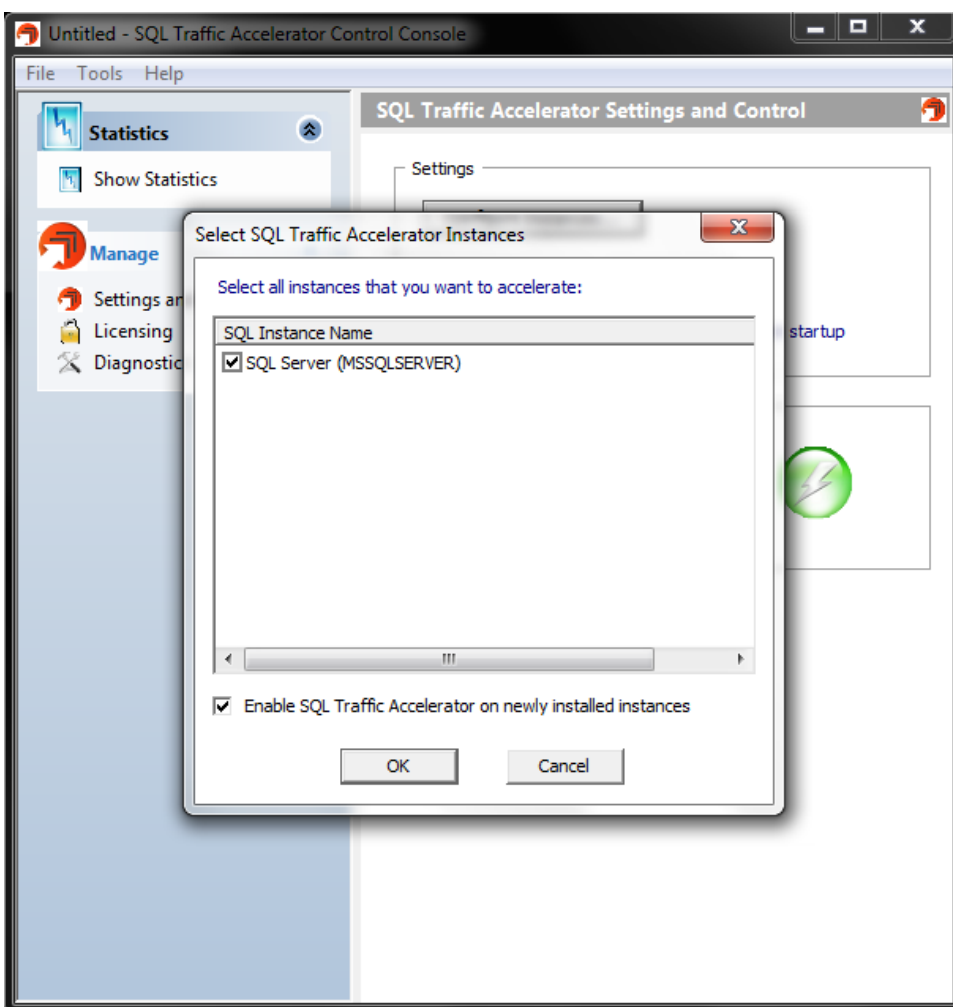


Manage SQL Traffic Accelerator on your instances

By default, SQL Traffic Accelerator is enabled on all SQL Server instances in your environment. You can also select an option that automatically enables SQL Traffic Accelerator on each newly-installed instance.

To select a SQL Server instance for acceleration:

1. Open the SQL Traffic Accelerator Control Console, and then click **Settings and Control**. The system displays the SQL Traffic Accelerator Settings and Control window.
2. Click **Configure Instances**. The system displays the Select SQL Traffic Accelerator Instances window as shown in the following image.



3. Check the box(es) of any SQL Server instance on which you want to enable SQL Traffic Accelerator, and then click **OK**.

Enable SQL Traffic Accelerator on new instances

You can avoid accidentally leaving off a SQL Server instance from the SQL Traffic Accelerator list by enabling the product on all newly-installed instances.

To enable this feature, open the Select SQL Traffic Accelerator Instances window, check **Enable SQL Traffic Accelerator on newly installed instances**, and then click **OK**.

Need more help? [Search the Idera Customer Support Portal](#)

Idera Website	Products	Purchase	Support	Community	About Us	Resources	Legal
-------------------------------	--------------------------	--------------------------	-------------------------	---------------------------	--------------------------	---------------------------	-----------------------