


Encrypt returned SQL Server instance data

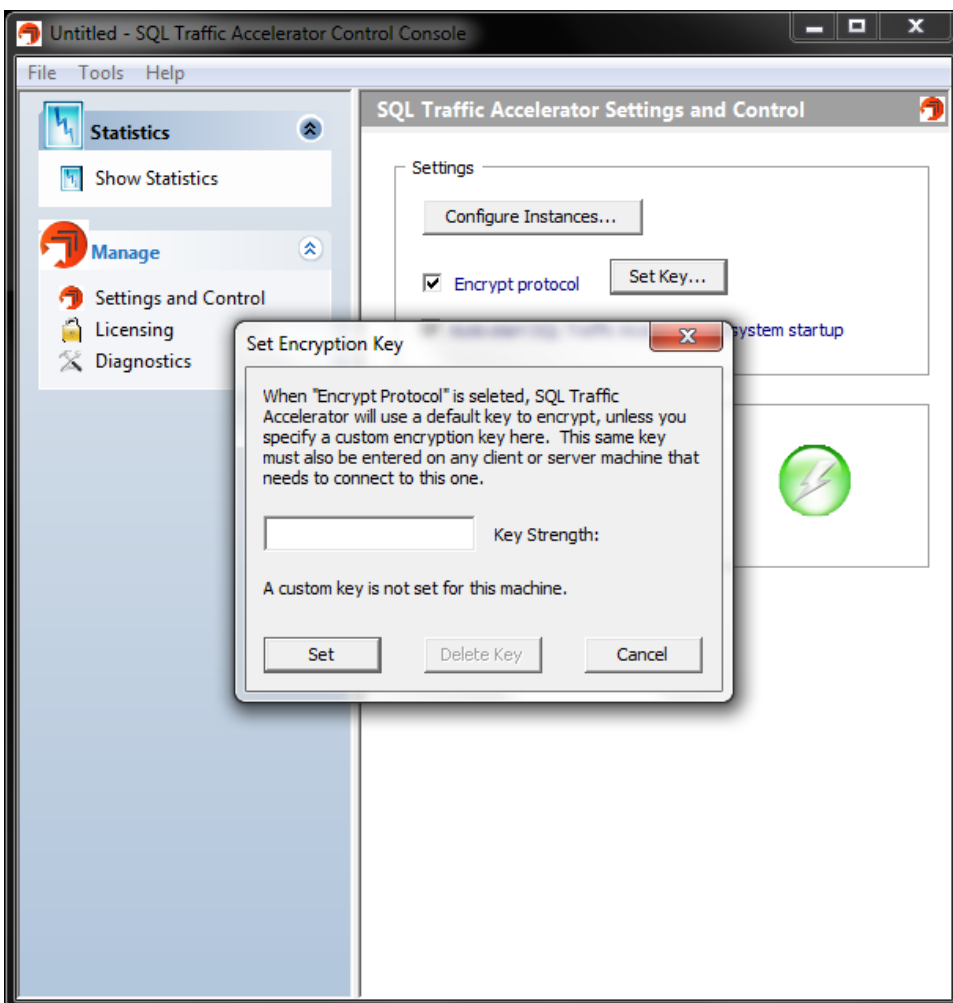
SQL Traffic Accelerator allows you to enable a high-speed, 128-bit encryption algorithm to encrypt the data returned from the server. Note that you need to enable this option only for the server-side installation.

To enable encryption:

1. Open the SQL Traffic Accelerator Control Console, and then click **Settings and Control**. The system displays the SQL Traffic Accelerator Settings and Control window.
2. Check the **Encrypt protocol** box. The system enables the **Set Key** button. *If you want to use the default encryption key*, you are done. *If you want to specify a custom encryption key*, continue with the next step.

 You must restart SQL Traffic Accelerator after setting a custom encryption key for the key to become active.

3. Click **Set Key**. The Set Encryption Key dialog box appears as shown in the following image.



4. Type a custom encryption key in the available field, and then click **Set**. SQL Traffic Accelerator displays a confirmation message to remind you that you must restart the program before you can be using the key.
5. Click **OK** to close the message.

To delete a custom key, simply open the Set Encryption Key dialog box, and then click **Delete Key**. SQL traffic Accelerator displays a confirmation message to inform you that the key is deleted. Click **OK** to close the message.

To disable encryption:

1. Open the SQL Traffic Accelerator Control Console, and then click **Settings and Control**. The system displays the SQL Traffic Accelerator Settings and Control window.
2. Clear the **Encrypt protocol** box. The system disables the encryption protocol.

[Need more help? Search the Idera Customer Support Portal](#)

Idera Website	Products	Purchase	Support	Community	About Us	Resources	Legal
-------------------------------	--------------------------	--------------------------	-------------------------	---------------------------	--------------------------	---------------------------	-----------------------