

Installation Instructions

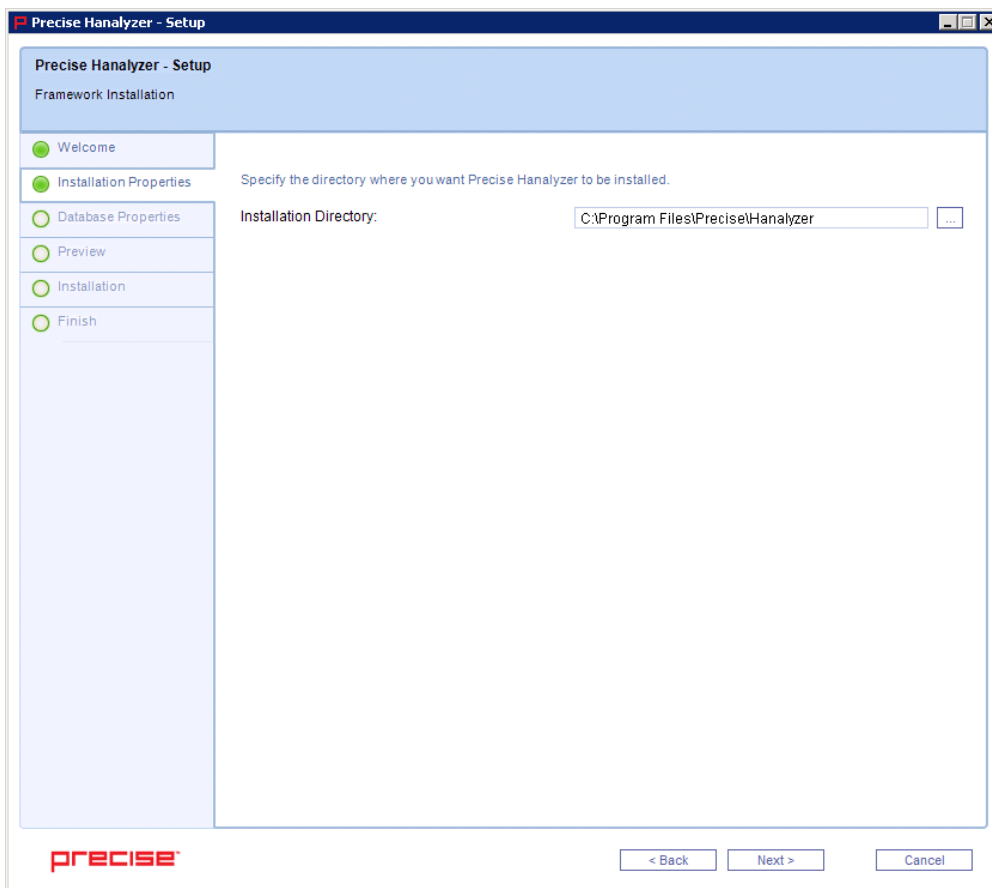
You can install the Precise Workload Analysis for SAP HANA on any computer that meets or exceeds the product requirements.

To start installing the Precise Workload Analysis for SAP HANA:

1. Log on with an administrator account to the computer on which you want to install Workload Analysis for SAP HANA.
2. Run Setup.exe in the root of the installation kit.
3. Click **Next** on the Welcome window of the setup program.
4. Review the license agreement. To accept this license agreement, click **I accept the terms and conditions of this License Agreement** , and then click **Next** .

Select an installation location

You can use the default install location or specify a different path. For your first install, we recommend using the default location. Click **Next** to continue with the installation.



Enter SAP HANA Instance details

SAP Hana Instance details consists of a Host Name and a two-digit Instance Number along with its logon credentials.

If the HANA server is of Multiple container mode, select Multiple containers in HANA Mode dropdown, and enter the Tenant database name or select System database whichever applicable.

Workload Analysis for SAP HANA - Setup

HANA Instance Installation
Property Settings

Specify the HANA Instance you wish to monitor by entering the host and instance number, as indicated.

HANA System Host Name: 172.20.102.246

HANA Instance Number: 10

HANA Mode: Single container

☒ Tenant database

Name:

☐ System database

Login: SYSTEM

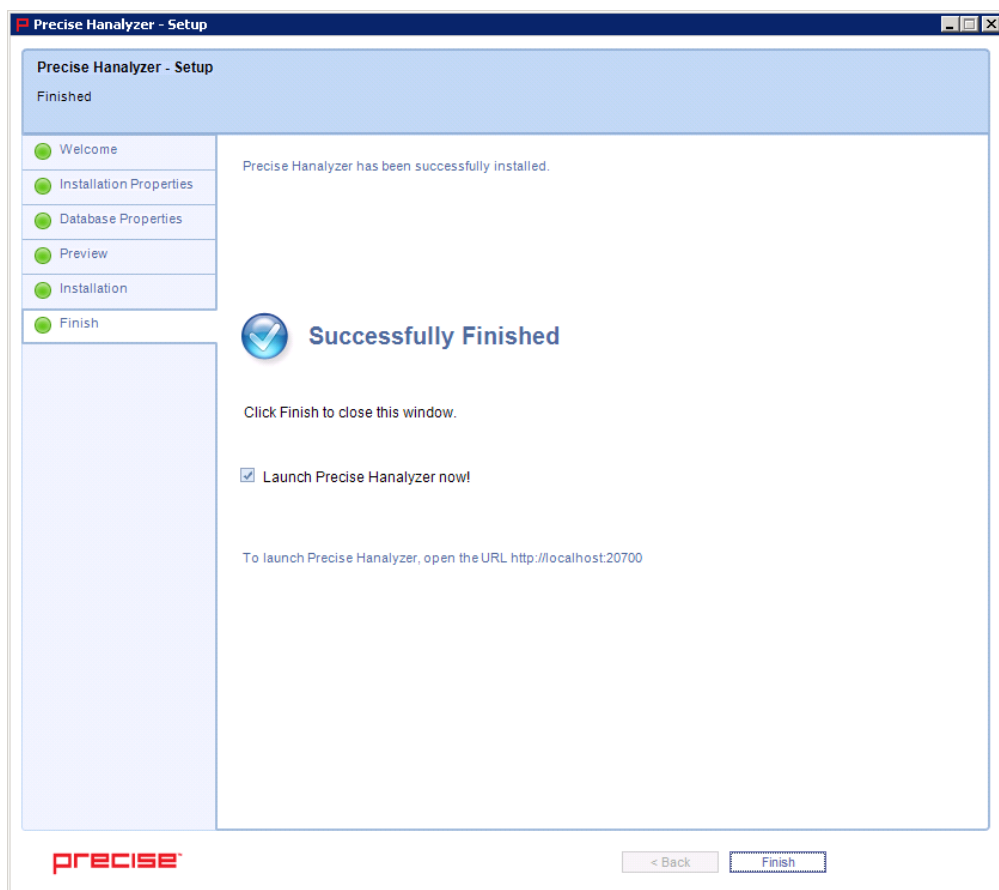
Password: *****

precise < Back Next > Cancel

Complete the install

The setup will grant the provided accounts access to Workload Analysis for SAP HANA.

Once the Workload Analysis for SAP HANA is installed, the Web GUI can be accessed on compatible web browser with the URL **http://<machine_name>:20700**.



To uninstall Precise Workload Analysis for SAP HANA, see [Product Uninstallation](#)

[IDERA Website](#) | [Products](#) | [Buy](#) | [Support](#) | [Community](#) | [About Us](#) | [Resources](#) | [Legal](#)