

# Installing SQL Elements

This section guides you through the installation of Idera SQL Elements. You can install Idera SQL Elements on any computer that meets or exceeds the [product requirements](#).

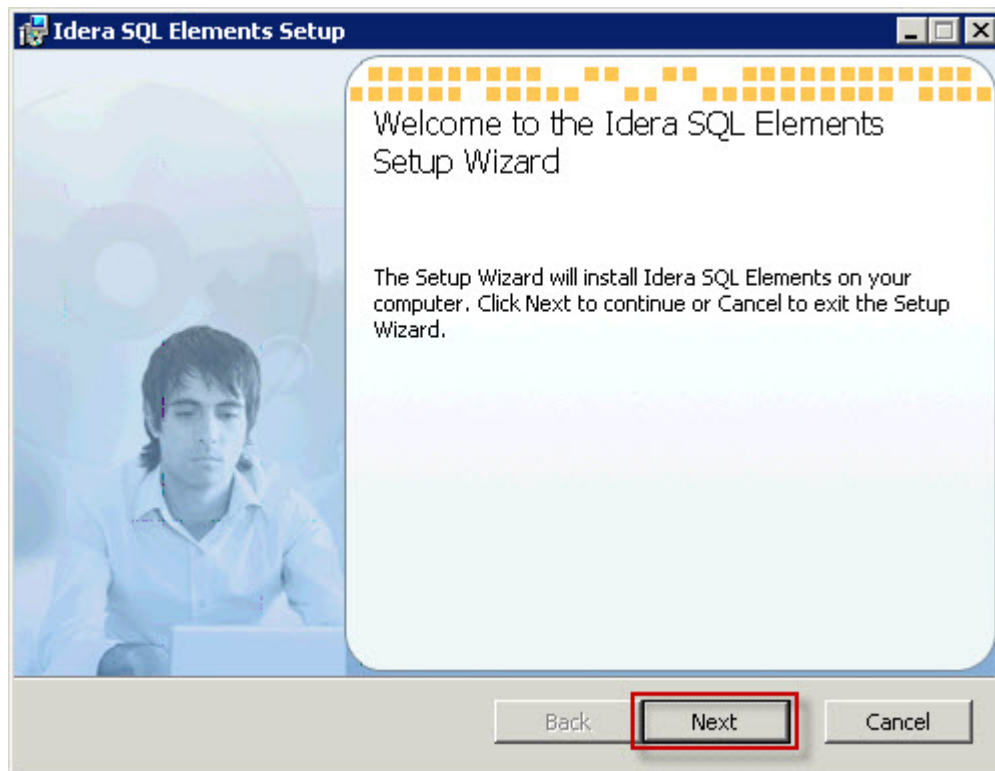
Before you install SQL Elements, be sure to have:

- A local administrator account on the machine you are installing the product.
- A host machine for SQL Elements services.
- A host SQL Server for the product databases.
- A service account with permissions to read/write and create databases and update their schemas.

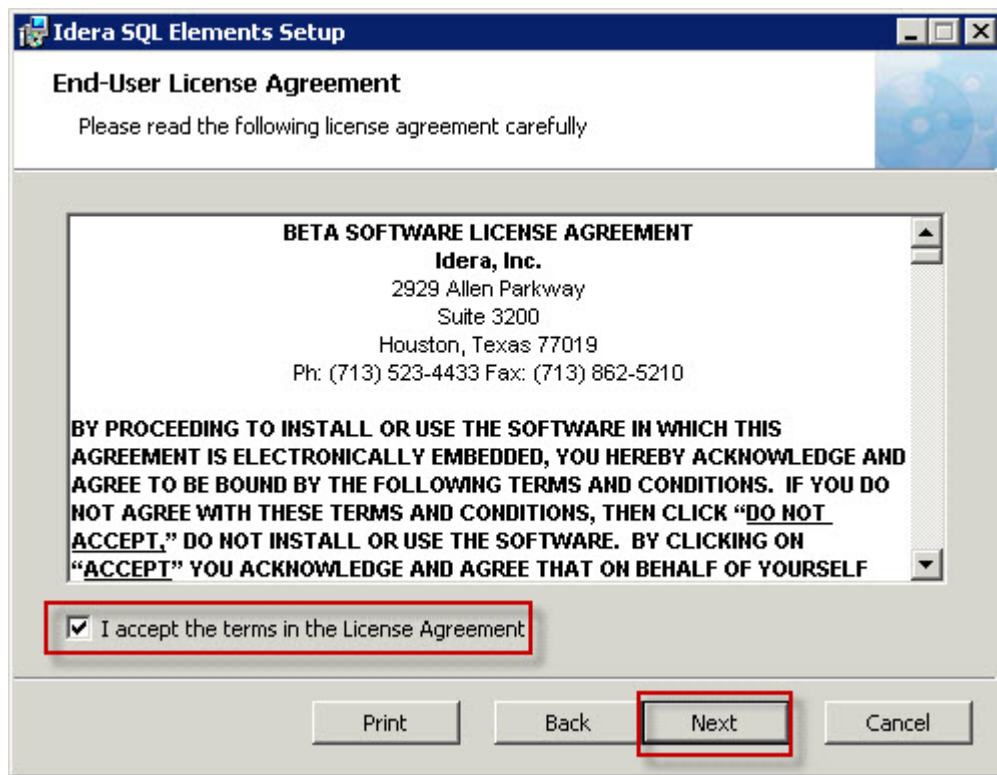
## Installing Idera SQL Elements

Before you install SQL Elements, be sure to meet the requirements mentioned before. Open the installer and follow these steps:

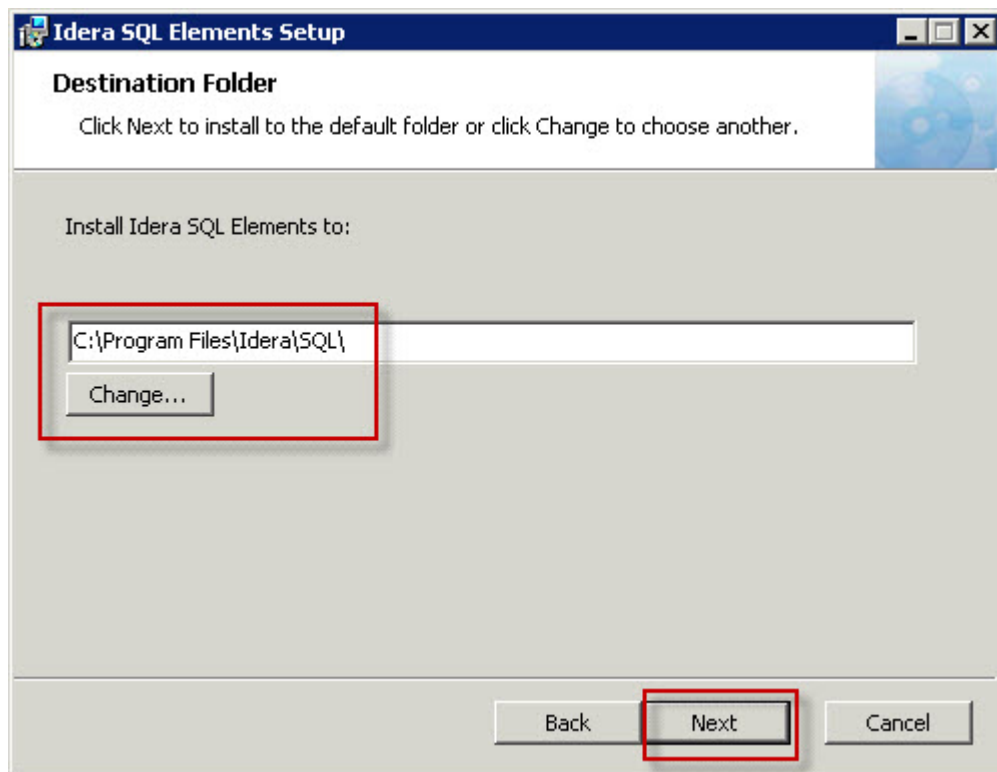
- On the **Welcome to the Idera SQL Elements Setup Wizard**, click **Next** to continue with installation.



- Click **I accept the terms in the License Agreement**, and then click **Next**.



- On the Destination Folder page, click **Next** to install to the default folder, or click **Change** to select the directory where you want to install SQL Elements. Click Next.



- On the Idera SQL Elements Service Account page, specify the **User Name** and **Password**, under which the services will run, and then click **Next**.
- Use the format <Domain Name>\<User Name> when typing the User Name.
- SQL Elements uses this account to connect, discover, and gather configuration information from SQL Servers. The installer grants the "Log on as a Service" right to the account that you specify.

**Idera SQL Elements - Setup Wizard**

**Service Account**

Specify the account that Idera SQL Elements services will run under.

The Idera SQL Elements services will run under this account.

Specify the service account:

Domain\UserName:

Password:

The "Log on as a service" right will be granted to this account.

Back Next Cancel

- On the Service Ports section, determine which ports you want to use for the SQL Elements Collection Service and for the Web Application Service.
- You must verify that the Firewall allows TCP (Transmission Control Protocol) traffic through your specified ports.
- By default, SQL Elements uses ports 9275 and 9276 for the Collection and Web Application services respectively. Click **Next**.



#### Port numbers and restrictions

- Ports values should be between 1 and 65535.
- Keep in mind, that browsers may block some specific ports. To check a list of all blocked ports on Mozilla Firefox, click [here](#).

**Idera SQL Elements - Setup Wizard**

### Service Ports

Specify the ports to be used by SQL Elements services.

The Idera SQL Elements services will use these ports.

Specify the ports:

Collection Service Port: 9275

Web Application Service Port: 9276

If Firewall is enabled make sure it allows TCP traffic through these ports.

Back Next Cancel

- On the Idera SQL Elements Repository page, specify the host SQL Server instance where SQL Elements will create the Elements and Core databases and type their respective names. These databases store collected data, alert information, and alert configuration settings.
- By default, the setup program uses your Windows logon account to create the Repository databases, but you can also choose to use Microsoft SQL Server connection credentials by checking the option **Use Microsoft SQL Server Authentication**. When you choose this option, a new window automatically opens, type the respective SQL Server login and password.

**Idera SQL Elements - Setup Wizard**

### Repository Databases

Specify the name and location of the SQL Elements repository databases.

Specify the host SQL Server and the name of the Repository databases.

SQL Server Instance: (local)

Elements Database Name: IderaElementsRepository

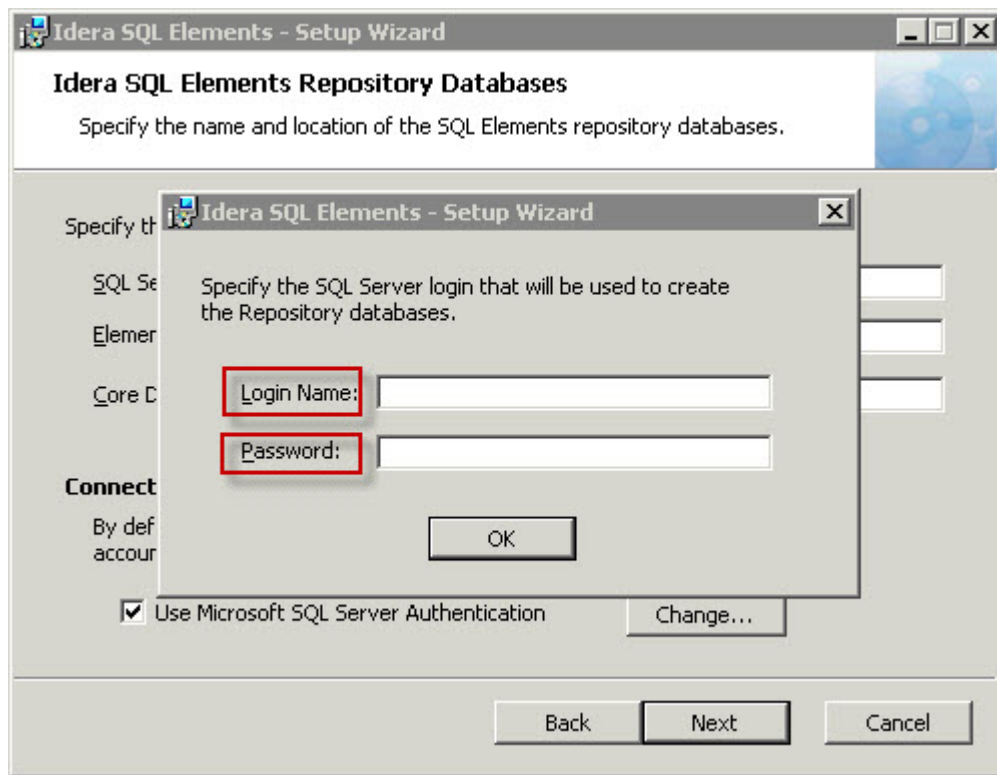
Core Database Name: IderaCoreRepository

#### Connection Credentials:

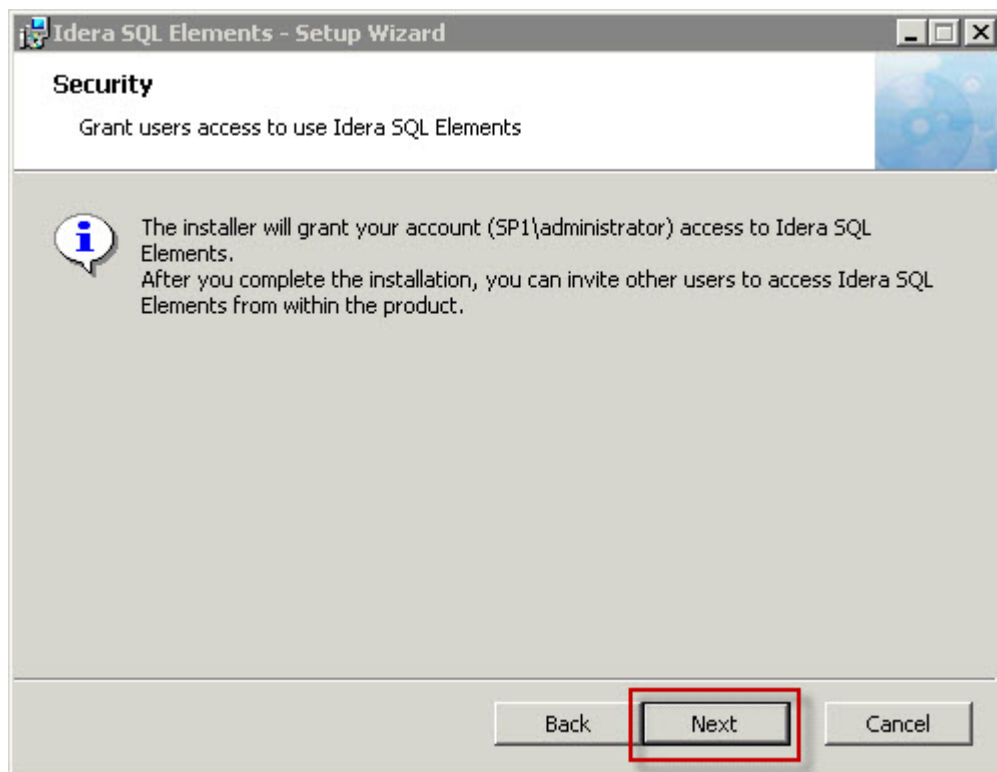
By default, the setup program uses the credentials of your Windows logon account to create the Repository databases.

☐ Use Microsoft SQL Server Authentication Change...

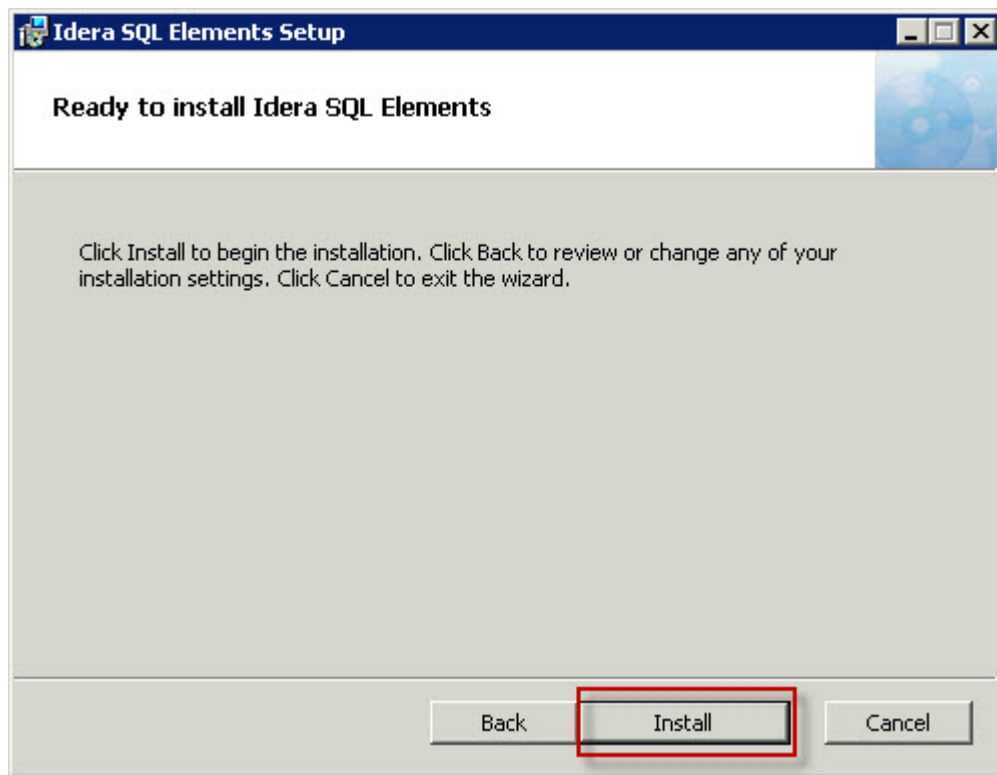
Back Next Cancel



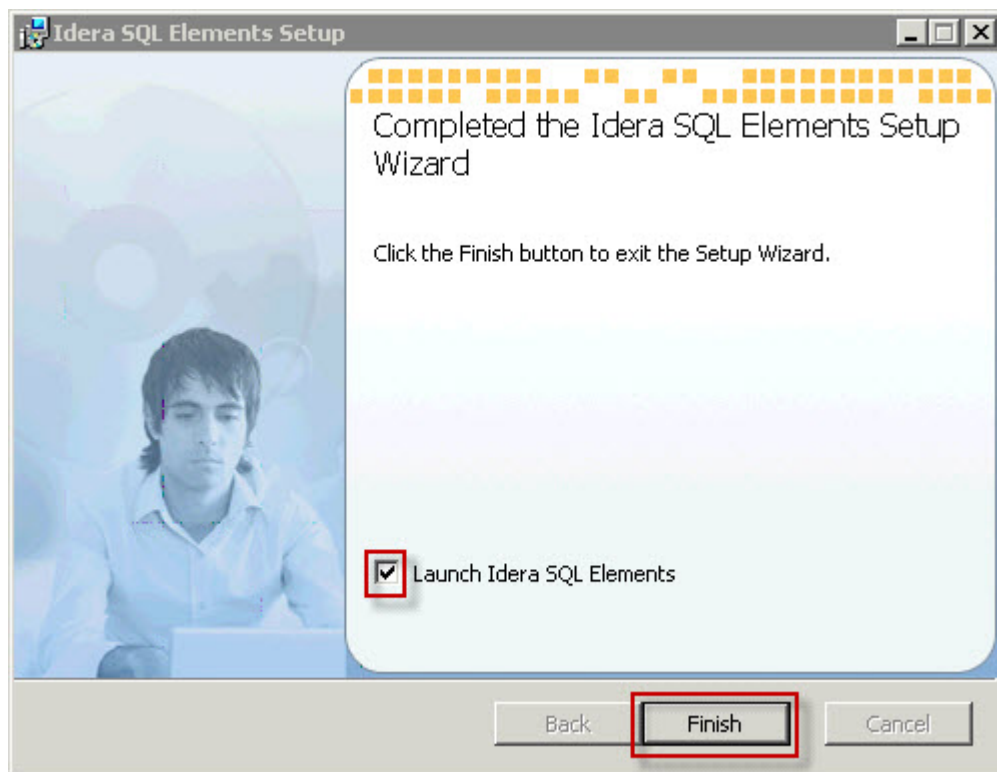
- The user installing SQL Elements has access to the product. If you need other users to have access to SQL Elements, you can grant them access from inside the product after the installation is complete. Click, **Next**.



- On the next section, click **Install** if you are ready to start the installation. If you want to review or change any of your installation settings, click **Back**



- After the installation is complete, click **Finish**. You can also check the box for launching SQL Elements immediately after installation. Alternatively, you can access SQL Elements web application through the following link: <http://<ServerName>:9276> where ServerName is the name of the machine on which you installed the SQL Elements services.



#### What account should you use for logging in to SQL Elements?

When SQL Elements launches on your browser, you should use your Windows user account with your respective password to log in to the product. Please take into account that SQL Elements does not store passwords.