

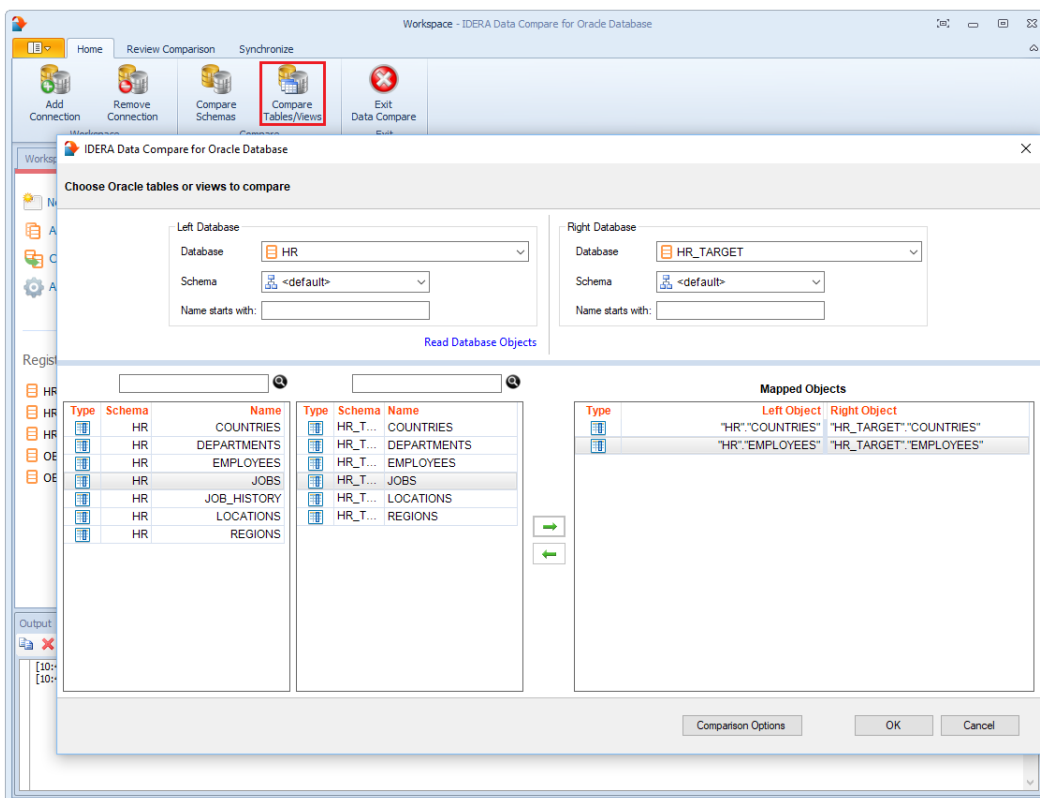
Data Compare Mapping Tables Manually

Data compare, by default, maps Oracle tables on two schema by name. To map them manually, click **Compare Tables/Views** on the "Home" tab of the ribbon. On the Object Compare window that appears you can first select the Oracle connections and schemas on which the objects reside. When there is a large number of objects you may wish to specify a pattern for the name of the objects you are looking for (ex. all tables that start with "a"). That makes it easier to find those objects.

IDERA Data Compare for Oracle Database, in addition to tables, can compare views. The Compare and Synchronize Views option determines whether views should be included in the comparison and synchronization. However, use this option with caution. There are limitations that Oracle imposes on views and not all views are updatable.

Once you make your selections, click **Read Database Objects**. Data compare will read objects on each schema and populate the two left bottom windows with the list of tables / views available.

Now you can map those objects one at a time irrespective of the object names. Select an object on the left, select an object on the right, and then click the left to right "arrow" button to map those two objects.



i The comparison options will affect the ability to compare the objects. If, for example, you cleared the **Compare and synchronize tables** option, then while you can still see and map the tables they will not be compared. The same holds true for views which by default are not included in the comparison.

[IDERA](#) | [Products](#) | [Purchase](#) | [Support](#) | [Community](#) | [Resources](#) | [About Us](#) | [Legal](#)