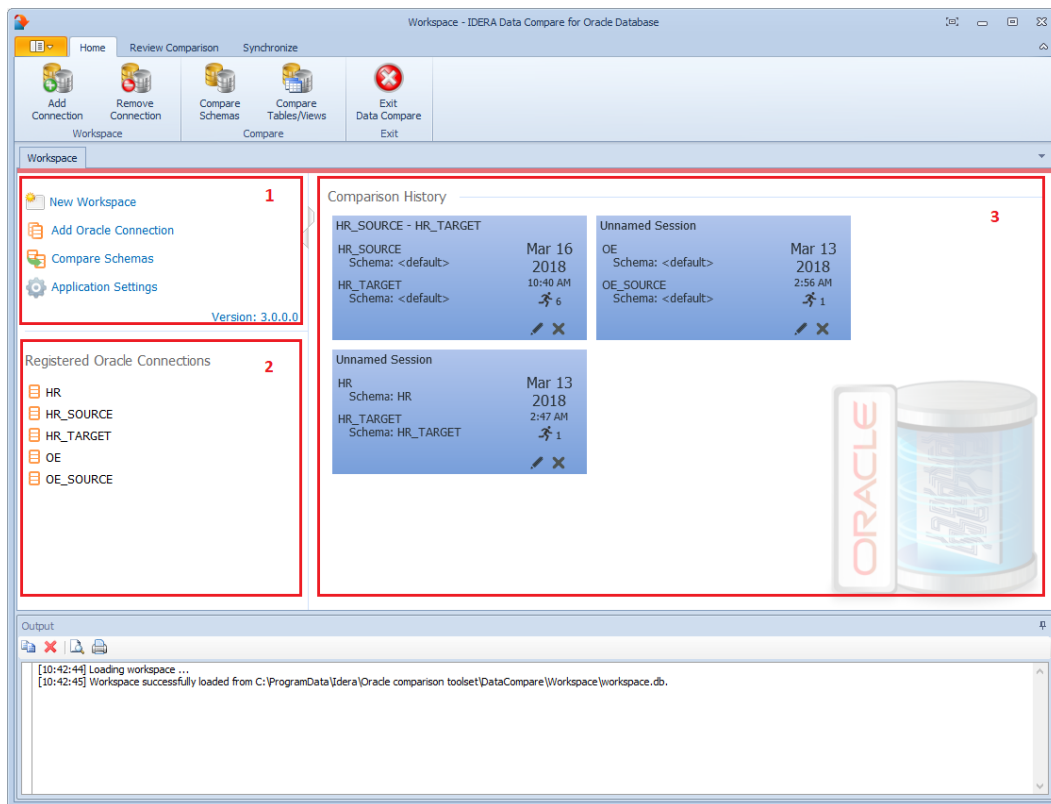


Data Compare Workspace

IDERA Data Compare for Oracle Database workspace is the storage and interface for saving and managing Oracle connections, credentials, comparison sessions, and other UI options.

The Workspace window is divided into the following sections:

- **Workspace links.** This section provides links that allow you to create a new workspace, add an Oracle connection, compare schemas and work with the application settings. The **New Workspace** link resets the current workspace by deleting the entire comparison history and all registered connections.
- **Registered Oracle Connections.** Contains the list of Oracle connections added to the workspace. If you mouse over a connection, you will see action links: **Edit** allows you to change the connection settings; and **Remove** un-registers a connection from the workspace.
- **Comparison History.** Contains the comparison sessions up to the maximum number of sessions specified in the application settings. To launch a session, simply click it.



[IDERA](#) | [Products](#) | [Purchase](#) | [Support](#) | [Community](#) | [Resources](#) | [About Us](#) | [Legal](#)