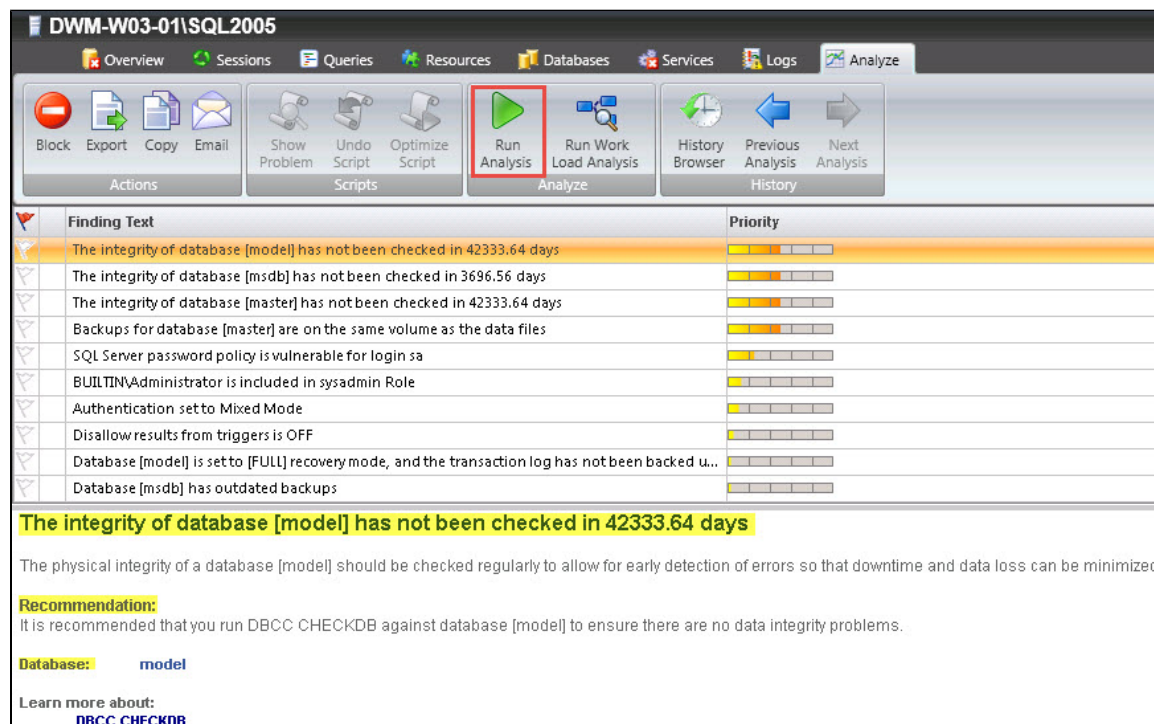


Run a prescriptive analysis on your SQL Server

When configuring your analysis, you can select any combination of [performance categories](#) to focus the analysis. Each category contains a set of performance metrics and their related recommendations. By picking a category, you are identifying which SQL Server areas concern you most.

Based on the chosen categories, SQL Diagnostic Manager polls your target SQL Server instance to gather the appropriate metrics and determine which recommendations match the server's current performance issues.



The screenshot shows the IDERA SQL Diagnostic Manager interface for a SQL Server instance named 'DWM-W03-01\SQL2005'. The 'Analyze' tab is selected, and the 'Run Analysis' button is highlighted with a red box. Below the toolbar, a table of findings is displayed, with the top finding highlighted in yellow:

Finding Text	Priority
The integrity of database [model] has not been checked in 42333.64 days	High
The integrity of database [msdb] has not been checked in 3696.56 days	Medium
The integrity of database [master] has not been checked in 42333.64 days	High
Backups for database [master] are on the same volume as the data files	Medium
SQL Server password policy is vulnerable for login sa	Medium
BUILTIN\Administrators is included in sysadmin Role	Medium
Authentication set to Mixed Mode	Medium
Disallow results from triggers is OFF	Medium
Database [model] is set to [FULL] recovery mode, and the transaction log has not been backed u...	Medium
Database [msdb] has outdated backups	Medium

The detailed view for the first finding is shown below:

The integrity of database [model] has not been checked in 42333.64 days

The physical integrity of a database [model] should be checked regularly to allow for early detection of errors so that downtime and data loss can be minimized.

Recommendation:
It is recommended that you run DBCC CHECKDB against database [model] to ensure there are no data integrity problems.

Database: model

Learn more about: [DBCC CHECKDB](#)

To run an analysis:

1. Right-click the appropriate SQL Server instance from the **Servers** tree and select **Properties**.
2. Select **Analysis Configuration** when SQL Diagnostic Manager displays the Monitored SQL Server Properties window.
3. [Configure your prescriptive analysis options](#).
4. Click **Run Analysis** in the Analyze tab.
5. When the analysis is complete, SQL Diagnostic Manager provides a priority-ranked list of recommendations (Finding Text column).



SQLDM lists recommendations by priority. The priority of a recommendation is determined by the performance gain you receive from making the suggested change, how relevant it is the parameters you specified when configuring the analysis.

6. Select a recommendation to have detail information displayed in the recommendation details pane.

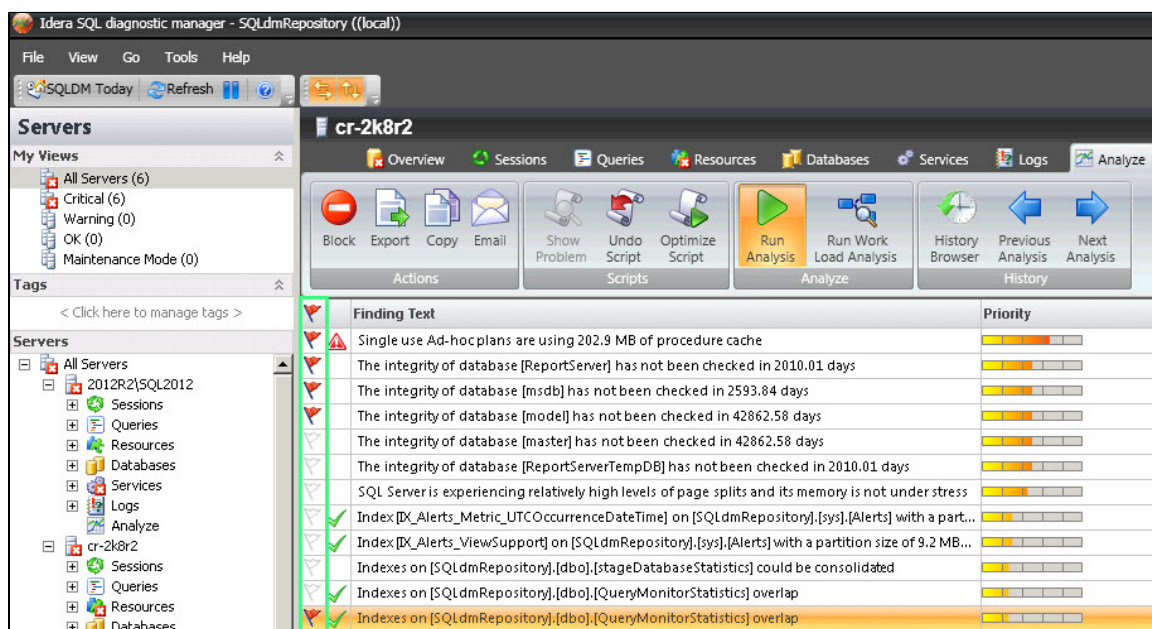


To fine-tune your analysis results, you can block a particular recommendation or database. For additional information, see [Fine-tune your analysis](#).

Flag a Recommendation

Flagging a recommendation allow you to mark it for a follow-up action. Use flags to identify recommendations that require further investigation or that you want to optimize at a later time. When you flag a recommendation, this flagged state is saved to the analysis file, allowing you easily find the recommendation later.

To flag recommendations, click the **Flag** icon next to the recommendation you want to flag.



Scripts

Optimize Script

Some recommendation has the Optimize Script option enabled. The Optimize Now window displays the script that used to enact the recommended change. Review the script, to either Run it or Cancel to return to the recommendation you were viewing.

When you run the optimize script, a  displays next to the optimized recommendation.



You can also copy the script to a Notepad or any other text editor to examine the code and research other options further before making the change.

Undo Script

The **Undo Optimization** window displays the script that is used to enact the recommended change. Review the script and either click the **Run** button to initiate the undo or click **Cancel** to return to the recommendation you were viewing. The undo script can be copied to the clipboard and used at a later time.



Executing the undo script on a recommendation that is not already optimized can harm your SQL Server environment. Before executing the undo script, be sure that the corresponding optimization is performed.

Show Problem

The **Show Problem** button launches the SQL Viewer window with the SQL text associated with the recommendation highlighted.

Additional actions

Block

Block a particular recommendation or recommendations to fine-tune your analysis.

Export

Export your recommendations in .xls file format.

Copy

Copy your recommendations to the clipboard so that you can view the text in a text editor.

Email

Email your analysis results with recommendations.

SQL **Diagnostic Manager** identifies and resolves SQL Server performance problems before they happen. [Learn more >>](#)

IDERA Website	Products	Purchase	Support	Community	About Us	Resources	Legal
-------------------------------	--------------------------	--------------------------	-------------------------	---------------------------	--------------------------	---------------------------	-----------------------