

Navigate the IDERA Dashboard

What is the IDERA Dashboard?

The IDERA Dashboard is a common technology framework designed to support the entire IDERA product suite. The IDERA Dashboard allows users to get an overview of the status of their SQL Servers and hosted databases all in a consolidated view, while providing users the means to drill into individual product dashboards for details. The IDERA Dashboard also includes widgets that consolidate data across the products. The IDERA Dashboard supports multiple copies of SQL Diagnostic Manager installations.

To access the IDERA Dashboard, select **IDERA Dashboard** from the Product menu.

IDERA Dashboard menu bar

In the IDERA Dashboard menu bar, you can perform the following actions:

- Select the product content you want to view through the **Product** menu.
- Access administration tasks through the **Admin** menu.
- Access to a number of assistance topics through the **Help** menu.

Product menu

The Product menu allows you to quickly toggle between all of your installed IDERA products. You can customize the default order of your products in the Product menu by selecting the **Customize** option from the drop-down list and then clicking, holding, and dragging the product labels to the desired order. After selecting the order, click **Save** to save the changes.



If the product list is long, the IDERA Dashboard displays the option More at the bottom of the menu. Click **More** to expand the next products in the list.

Welcome user

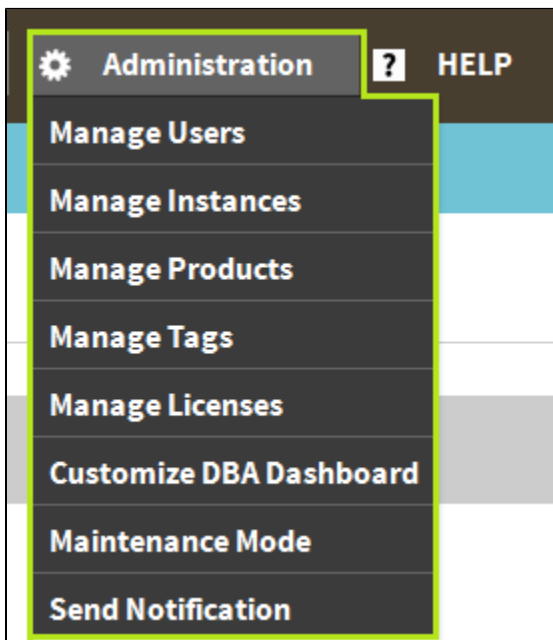
The user menu, which displays **Welcome <domain\username>**, allows you to manage the user account (if the user has the Product Administrator role) and log out of the IDERA Dashboard session. Click **Manage Accounts** to display the Manage Users view with the current user account selected and the details displayed in the User\Group Details pane.

Admin menu

The **Admin** menu provides a list of shortcuts to the views available on the Administration tab.

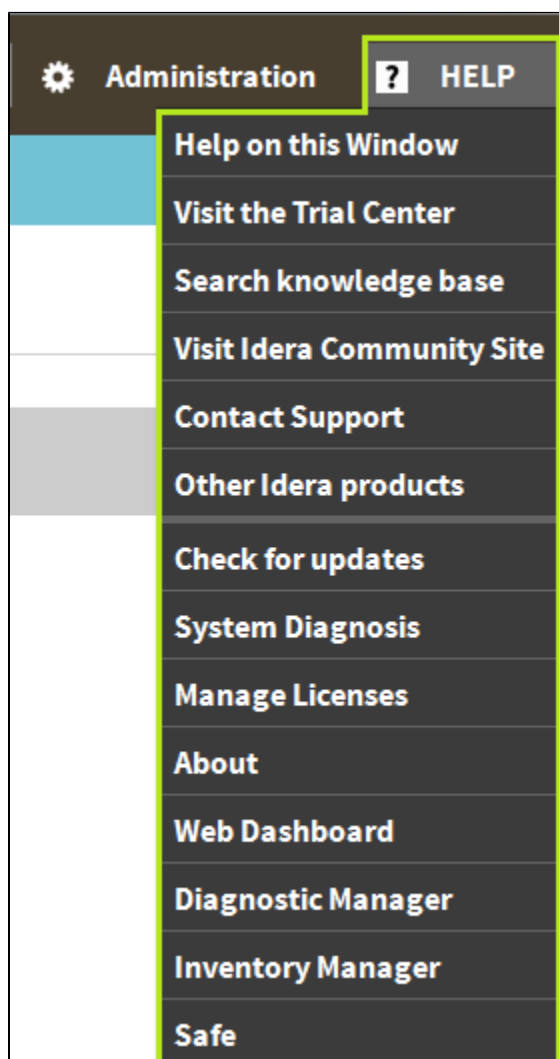


If a menu item is displayed but disabled, the current user account does not have the permission necessary to perform the associated function.



Help menu

The Help menu provides links to helpful areas such as the IDERA Knowledge Base or the IDERA Customer Support.



IDERA Dashboard Tabs

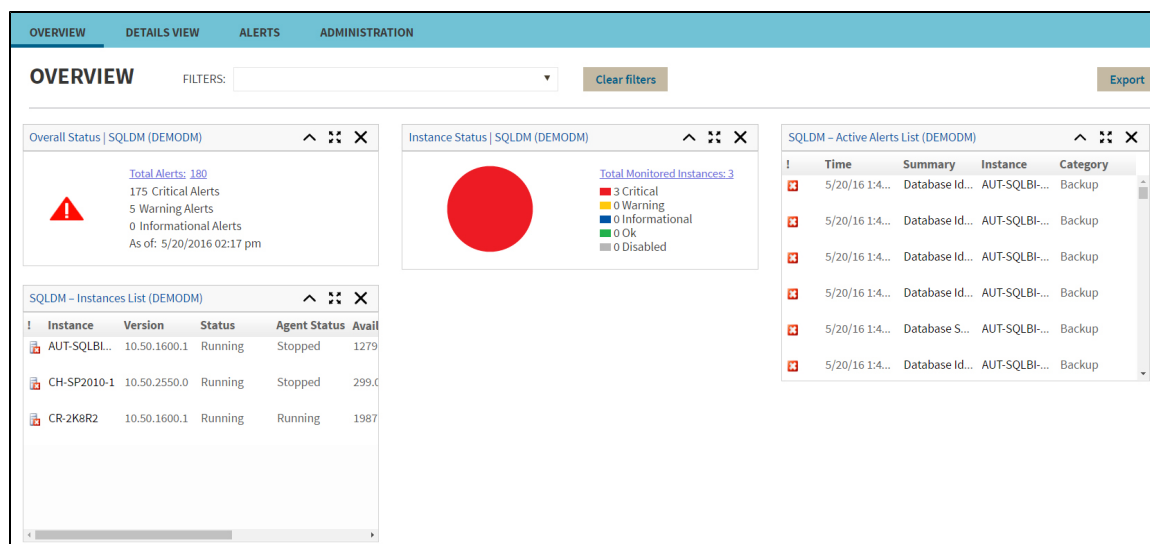
The IDERA Dashboard is comprised of the following tabs:

- [Overview](#)
- [Details view](#)
- [Alerts](#)
- [Administration](#)

What actions can be performed in the Overview tab of the IDERA Dashboard?

In the IDERA Dashboard users can glance at their registered products overall status through the Overview tab (Click image to view full size). This tab contains product widgets of all the products registered with the IDERA Dashboard. By default the Overview tab contains the following widgets:

- Overall status
- Instance status
- Active alerts list
- Instances list



In the Overview tab, you can perform the following actions:

- Expand or collapse a widget
- View a widget in full size
- Remove a widget
- Filter widget information by Products and by Tags.



Customize the Main Navigation tab order

Users can customize the main navigation tab order of the IDERA Dashboard in the [Configure Navigation order](#) widget of the Administration view.



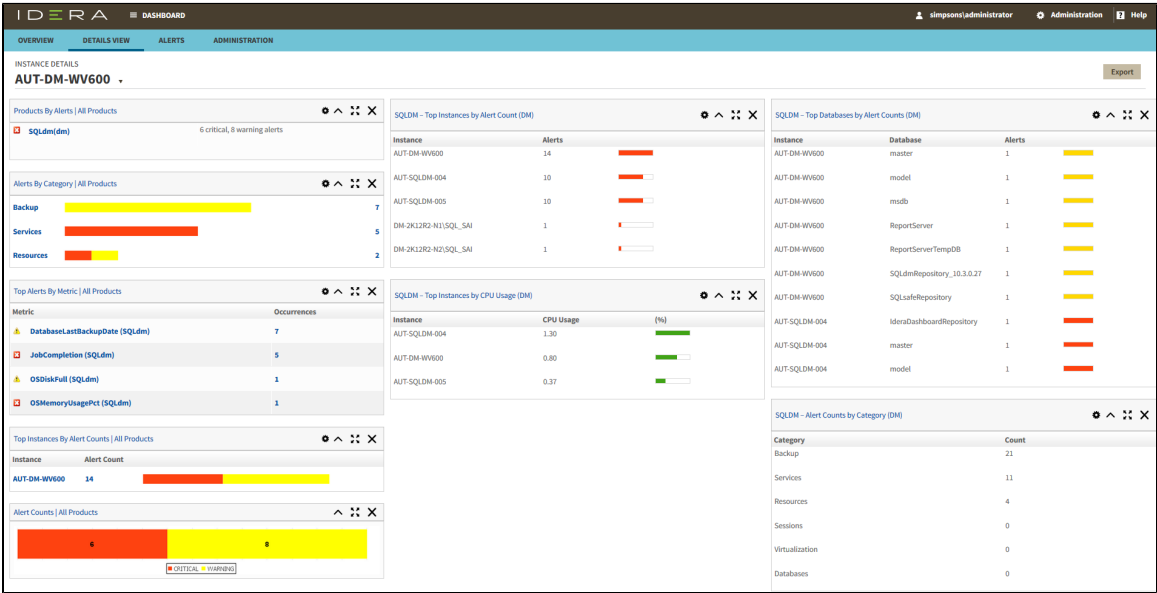
Customize the Overview tab

Users can customize the Overview tab by adding, removing, and arranging widgets in the [Configure Dashboard Views](#) widget of the Administration view.



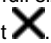
What actions can be performed in the Details view of the IDERA Dashboard?


In the IDERA Dashboard users can select specific metrics to display in the Details view tab (Click image to view full size). This tab contains product widgets of all the products registered with the IDERA Dashboard. By default the Details view tab contains the following widgets:

- Products by Alerts (All Products).
- Alerts by Category (All Products).
- Top Alerts by Metric (All Products).
- Top instances by Alert Counts (All products)
- Alerts by Counts (All Products).
- Top Instances by Alert Count (DM)
- Top Instances by CPU Usage (DM)
- Top Databases by Alert Counts (DM)
- Alert Counts by Category (DM)



In the Details tab, you can perform the following actions:

- Expand or collapse a widget 
- View a widget in full size 
- Remove a widget 
- Filter widget information by SQL Diagnostic Manager Repository.



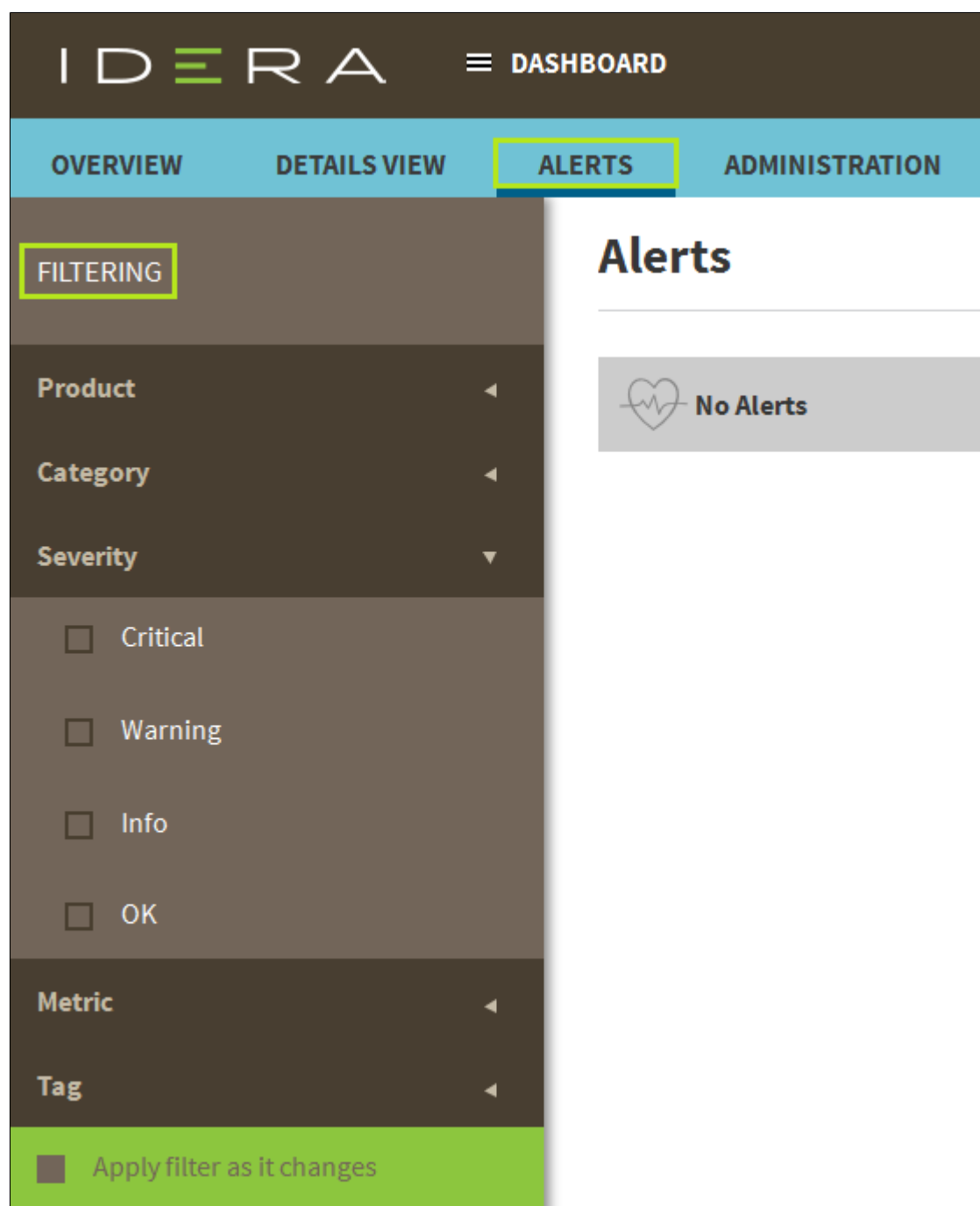
Customize the Details view tab

Users can customize the Details view tab by adding, removing, and arranging widgets in the [Configure Dashboard Views](#) widget of the Administration view.

What actions can be performed in the Alerts view of the IDERA Dashboard?

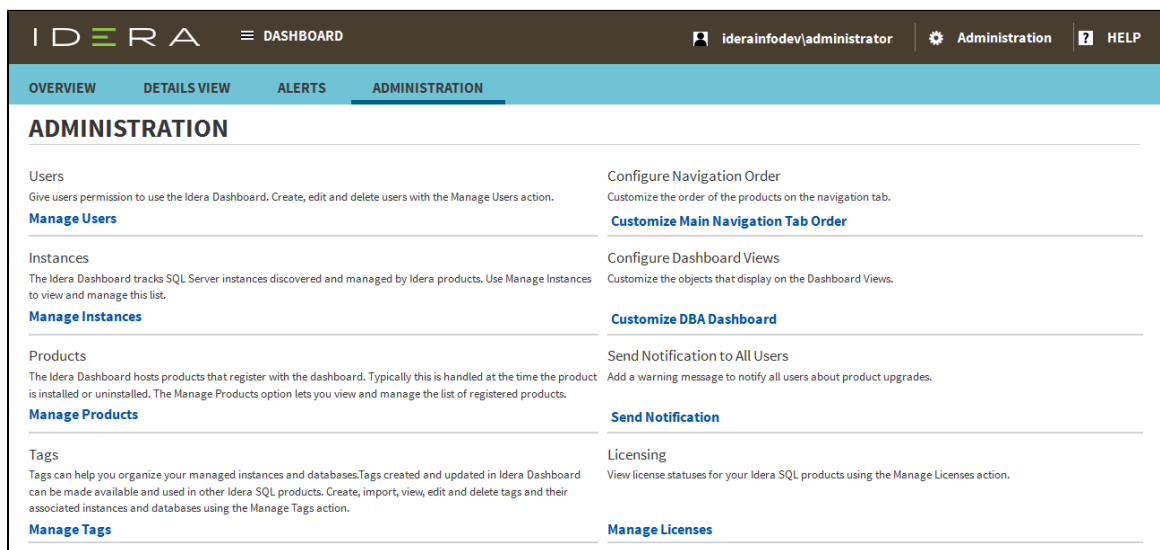
In the IDERA Dashboard users can access information on all registered products current alerts and filter them based on:

- Product
- Category
- Severity
- Metric
- Tag



What actions can be performed in the Administration view of the IDERA Dashboard?

In the IDERA Dashboard all products show a common Administration tab, granted the logged-in user has administrator privileges. Selecting this tab, displays the Administration view which hosts a range of widgets for performing administration-related actions. Click image to view full size.



The Administration view of the IDERA Dashboard provides a central set of services related to specific actions such as:

- Security
- Product registry
- Instance registry
- Tags management
- Navigation order configuration
- Dashboard views configuration
- Notifications
- License Management

For more information on each service and what configuration settings are available, visit each respective section.

SQL Diagnostic Manager identifies and resolves SQL Server performance problems before they happen. [Learn more > >](#)

IDERA Website	Products	Purchase	Support	Community	About Us	Resources	Legal
-------------------------------	--------------------------	--------------------------	-------------------------	---------------------------	--------------------------	---------------------------	-----------------------