

Default Dashboards

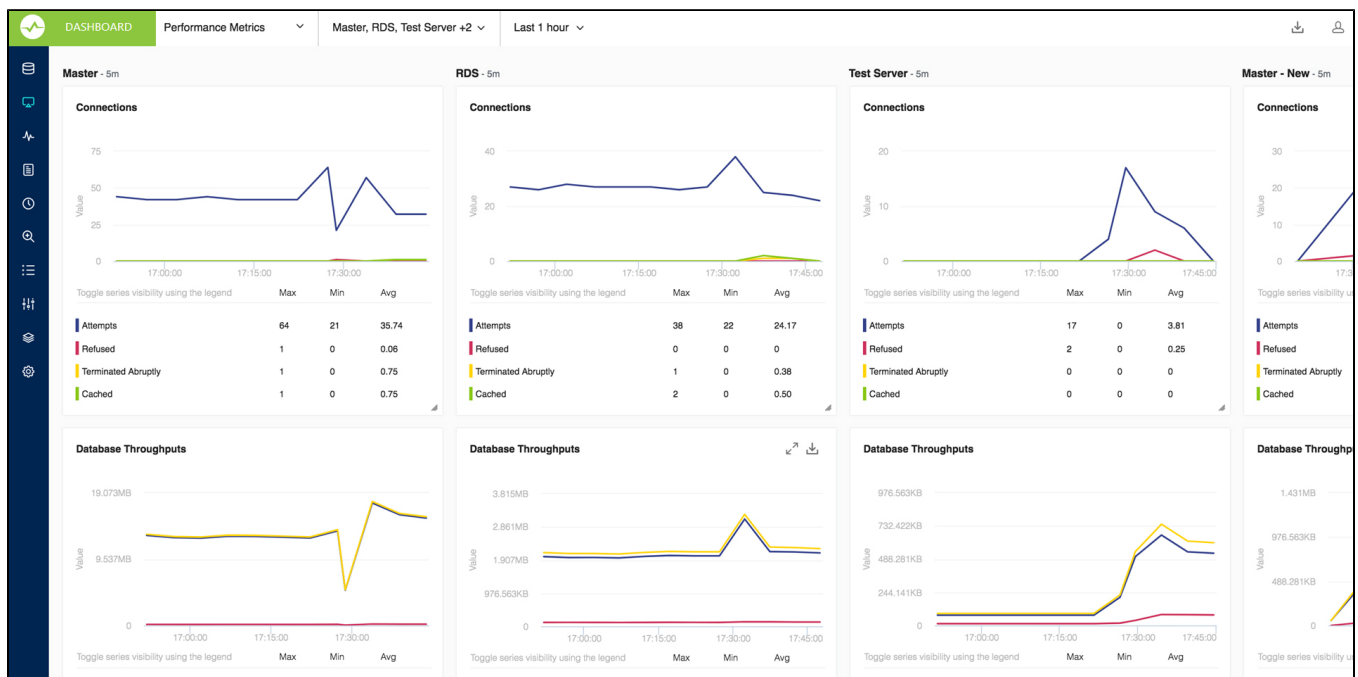
The Dashboard is a page displaying a graphical view of the server parameters and metrics that in most situations will give you a quick overview of the server load and performance. SQL DM for MySQL ships with a default dashboard called "Performance metrics" which includes the metrics:

MySQL metrics:

- Connections
- Cache misses
- Statements
- Database Throughputs

System metrics:

- Disk IO
- CPU usage



How is the refresh interval defined?

Every graph displays related metrics using different colors. In the Charts interface the X-axis timestamps are not printed, and the time interval between each reflects the server-specific setting for the sample interval. By default, the chart displays the last one-hour timeframe. If no data is available for a period because MONyog(SQL DM for MySQL) service was stopped, two empty sample points display in the grid no matter how long time has passed.

Adding Dashboards

Just click the drop down menu containing the Dashboard names, and select the **Add New Dashboard** option. This opens the page where you can give a suitable dashboard name and decide which charts to enable for your dashboard.

Dashboards settings

Dashboard settings can be changed from the dashboard page itself. These are local (browser specific) settings that are stored in a cookie.

- The size of the Chart is configurable, you can stretch/reduce the charts size.
- You can hover on the anchor points on the charts to see the actual values.
- You can customize the look of charts by changing the chart color under **Settings -> General -> CHART COLOR**
- You can rename the dashboard name, add/remove charts to the dashboard, and delete the dashboard from the dashboard name drop-down menu.

MySQL metrics

Charts to show on this dashboard

[NEW CHART](#)



MySQL Charts

<input type="checkbox"/>	MySQL Available	
<input checked="" type="checkbox"/>	Connections	
<input checked="" type="checkbox"/>	Cache Misses	
<input checked="" type="checkbox"/>	Statements	
<input type="checkbox"/>	Database Transactions	
<input checked="" type="checkbox"/>	Connections Used	
<input type="checkbox"/>	Percentage of Cache Hits	
<input type="checkbox"/>	Query Cache Efficiency	
<input checked="" type="checkbox"/>	Query Cache Memory	
<input type="checkbox"/>	Queries in Cache	
<input type="checkbox"/>	InnoDB Row Details	
<input type="checkbox"/>	InnoDB Buffer Pool Page Activities	
<input type="checkbox"/>	InnoDB Data Activities	
<input type="checkbox"/>	InnoDB Row Lock Acquiring Time	
<input type="checkbox"/>	MuSAM Key Buffer Activities	

SAVE

Charts recommendation

Recommended number of collections is 50 for better visibility.



This recommendation is based on 1280 x 1024 screen resolution. So, depending upon your screen resolution the number of collections may vary to some extent.

Also, charts can be exported as PDF/JPG/PNG formats, for more information review [Exporting graphs](#).

[IDERA](#) | [Products](#) | [Purchase](#) | [Support](#) | [Community](#) | [Resources](#) | [About Us](#) | [Legal](#)