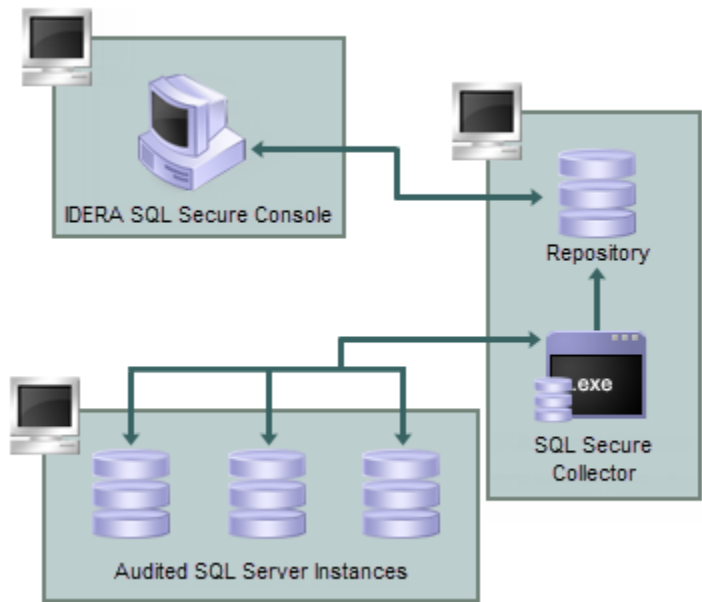


How SQL Secure works

IDERA SQL Secure uses a Collector to gather permissions information at scheduled intervals. SQL Secure runs this executable using a SQL Server job. The Collector stores each data set as an audit snapshot in a SQL Secure Repository database. The SQL Secure Console connects to the Repository to view your permissions data.

The following diagram displays the IDERA SQL Secure workflow.



SQL Secure tells you who has access to what on your SQL Server databases. [Learn more >>](#)

IDERA Website	Products	Purchase	Support	Community	About Us	Resources	Legal
-------------------------------	--------------------------	--------------------------	-------------------------	---------------------------	--------------------------	---------------------------	-----------------------