

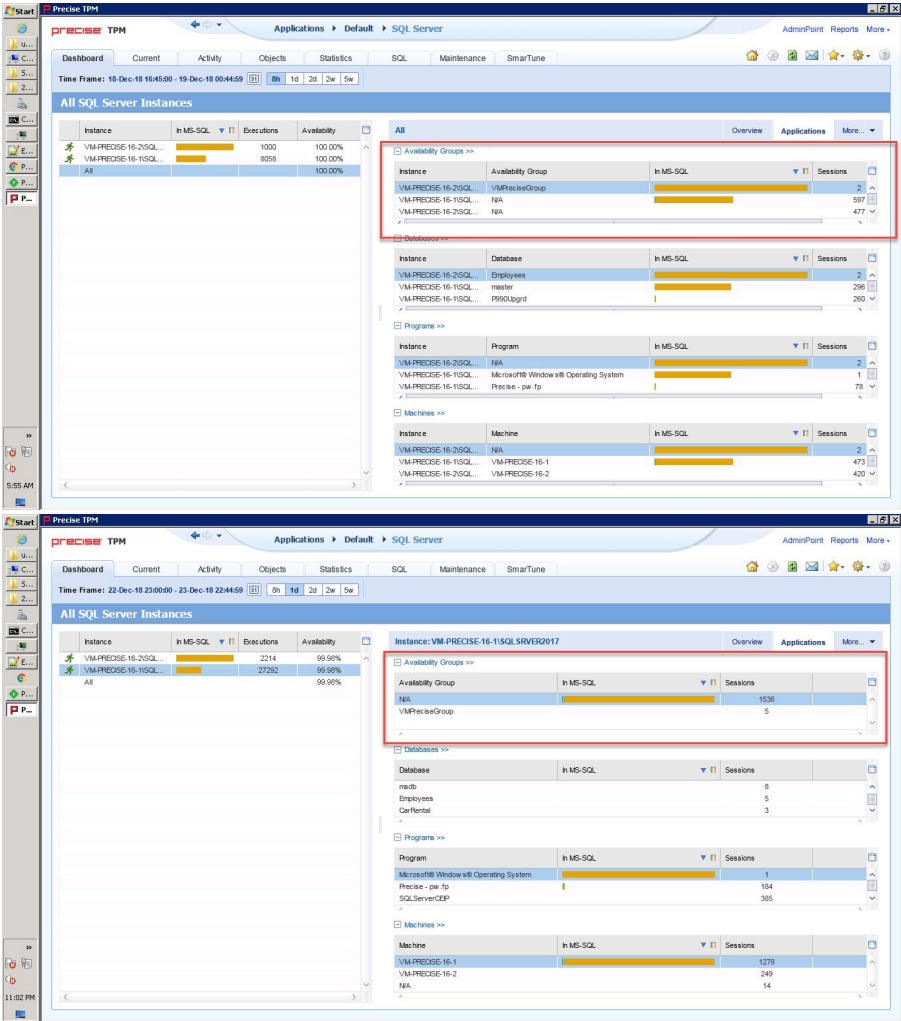
# SQL Server Always On

Precise 10.0 includes support for monitoring SQL Server instances in an Always On configuration. This topic illustrates some of those supported features with screenshots.

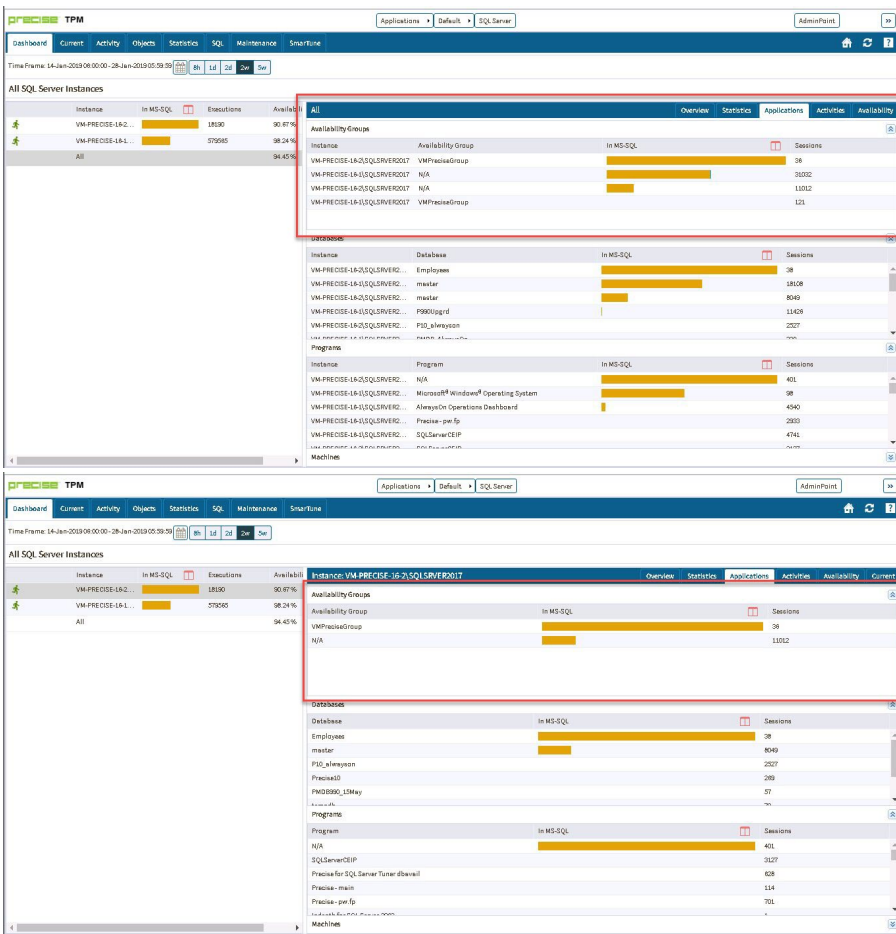
## Dashboard tab

In the Dashboard tab, the Applications tab on the right includes a new **Always On Groups** section. This section displays the availability group name, time in MS-SQL, and number of sessions under each group. Databases which are not part of any group appear as N/A.

### Previous Precise versions



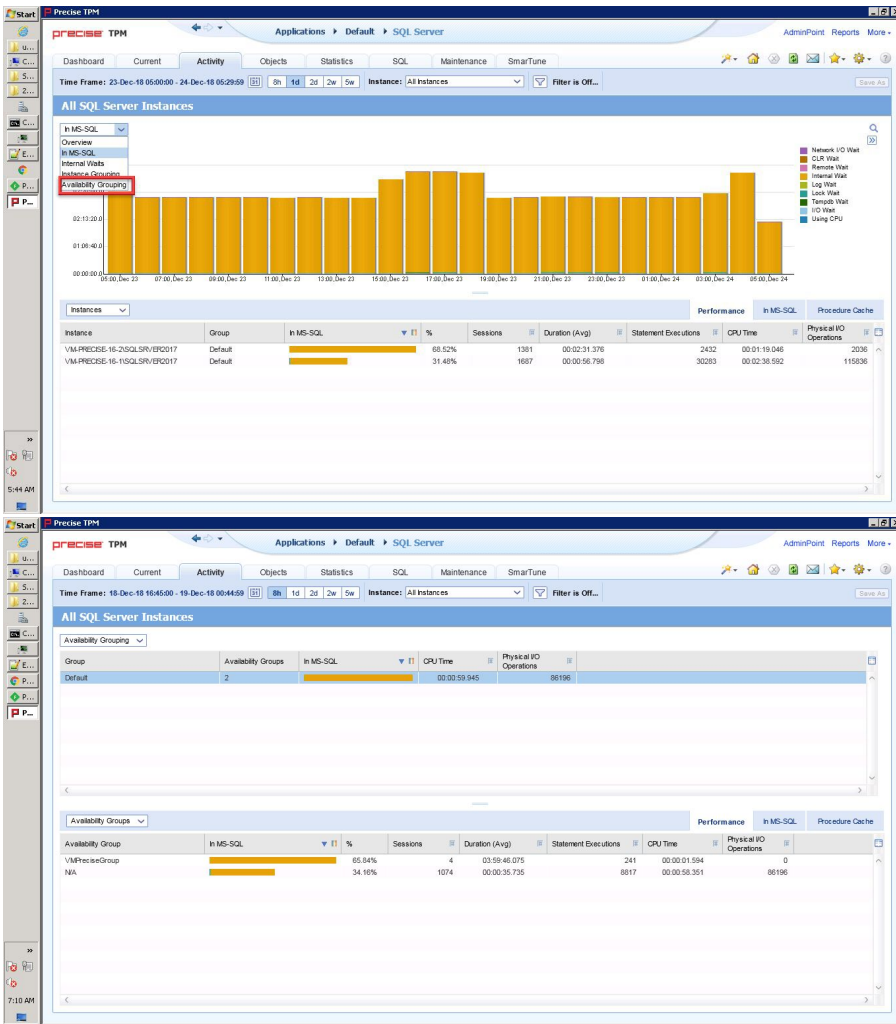
### Precise 10.0



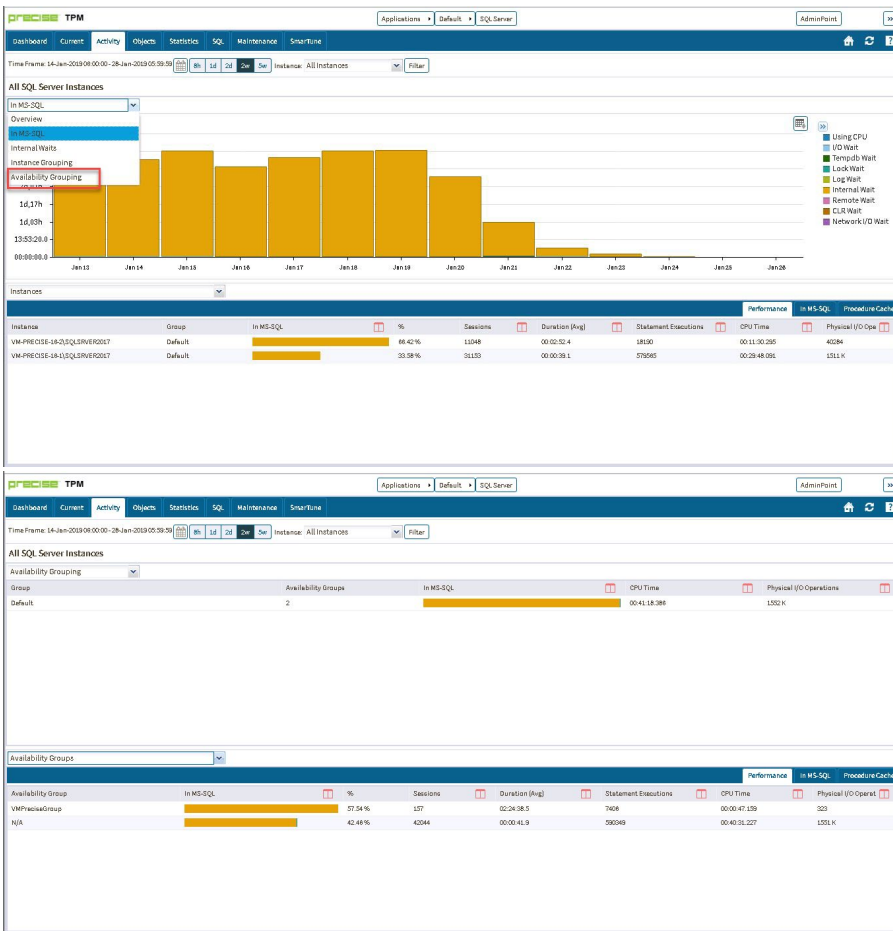
## Activity tab

In the Activity tab, at App Tier level, the top drop-down includes a new **Availability grouping** option. Selecting this option causes Precise to display data for all instances grouped by availability group. Activity for databases that are not part of any availability group go under **Default**.

## Previous Precise versions

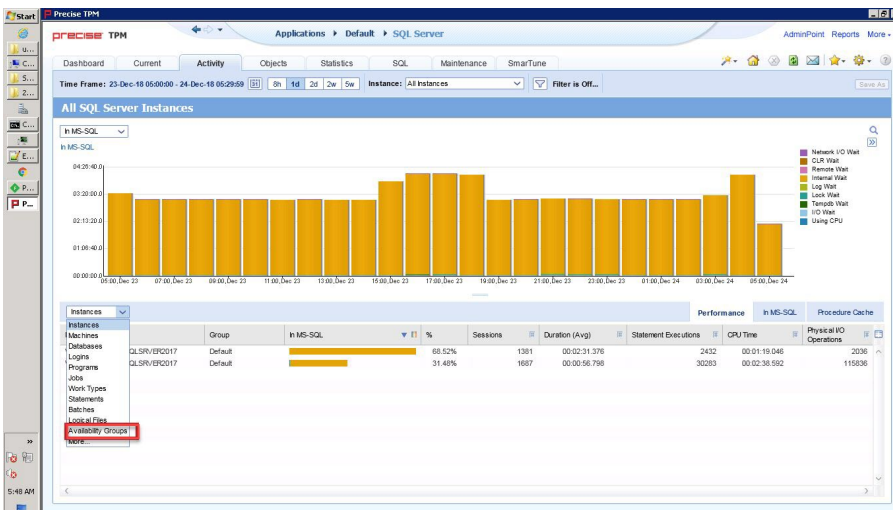


Precise 10.0



The lower **Associate** field now includes an **Availability Groups** option.

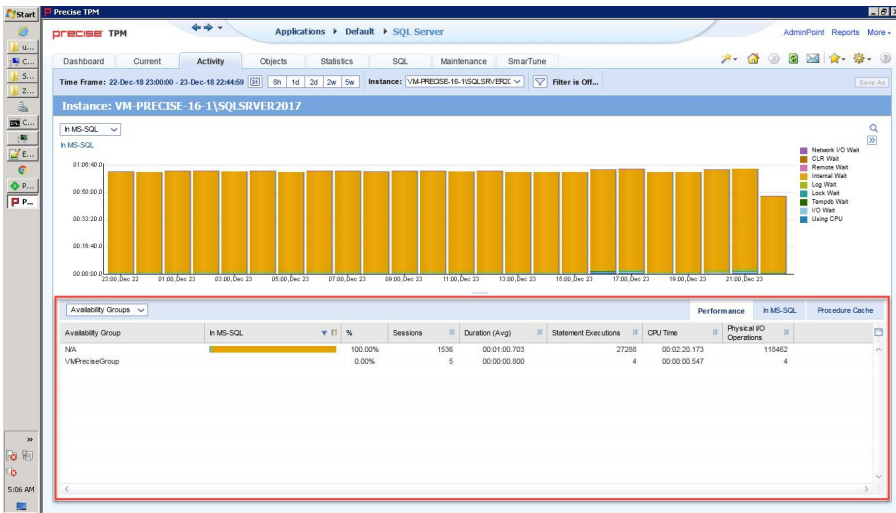
### Previous Precise versions



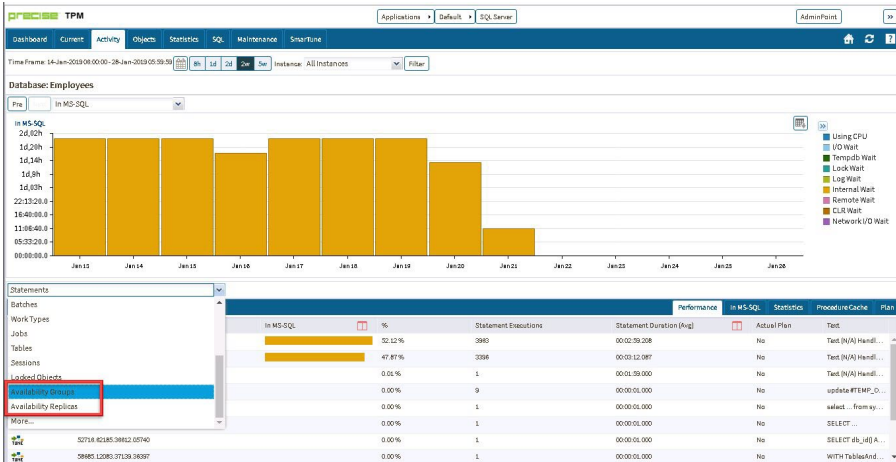
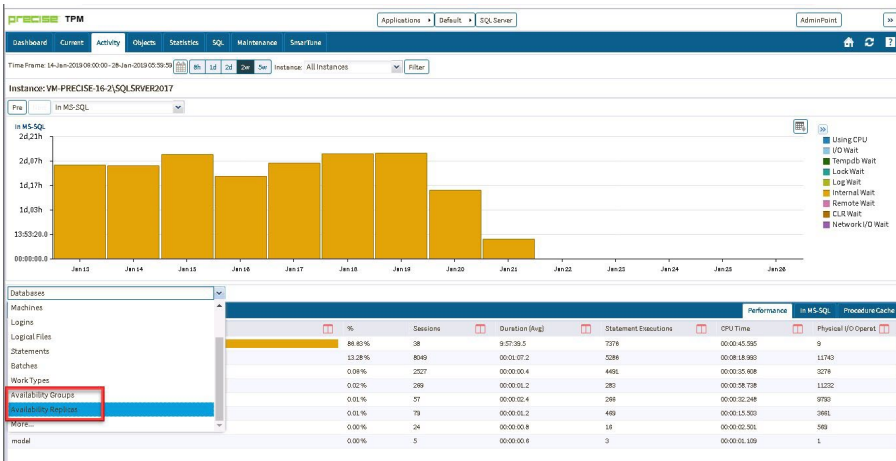
Precise 10.0

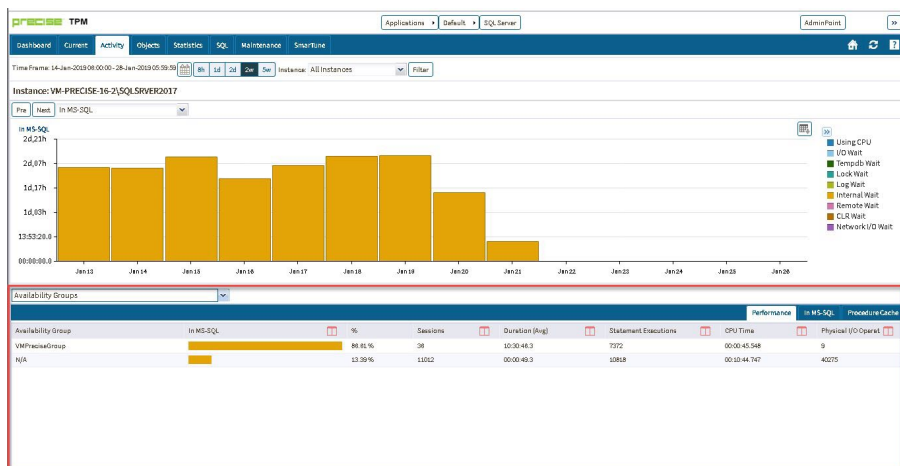






## Precise 10.0





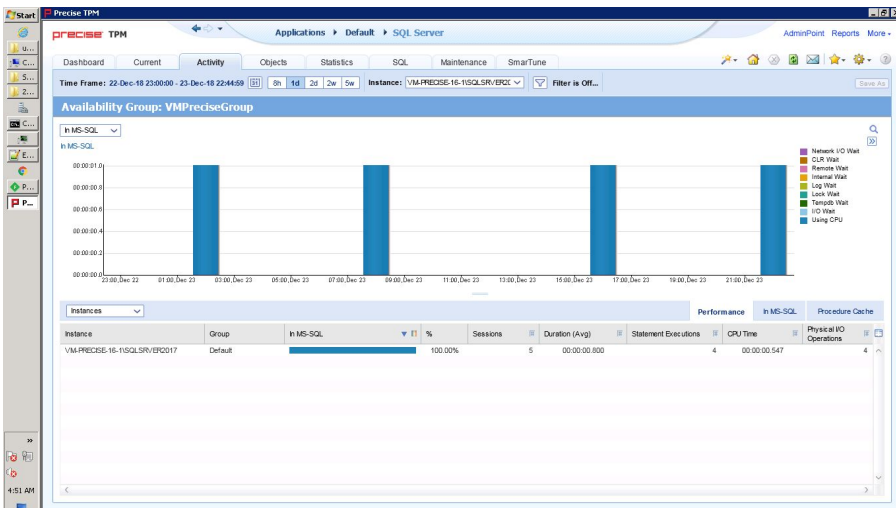
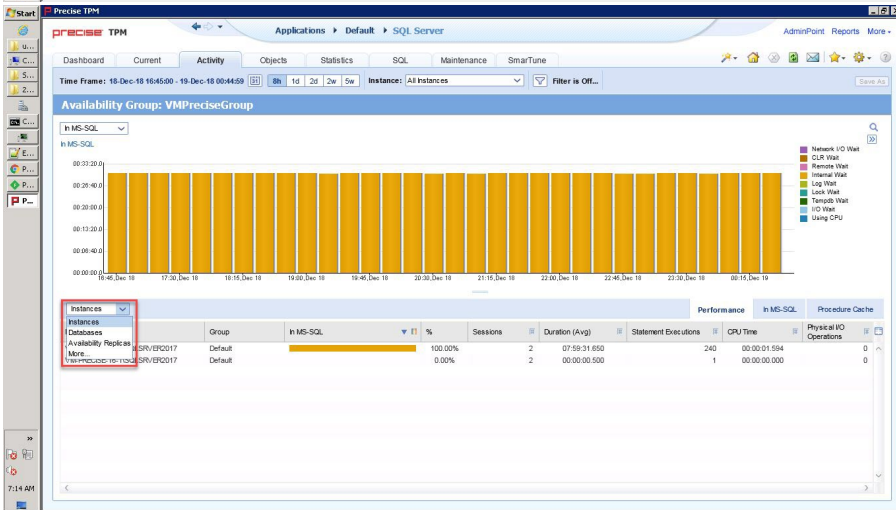
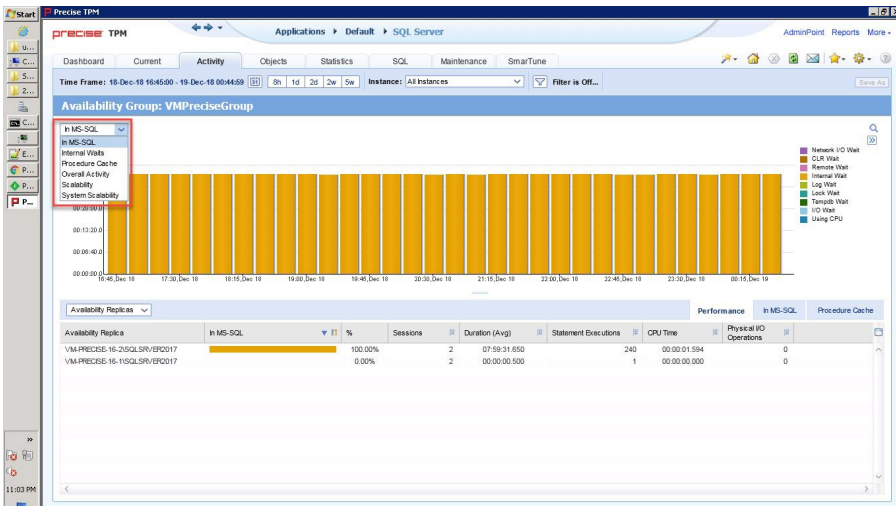
At the **Availability Group** context, the upper field includes the following options:

- **Internal Waits**
- **Procedure Cache**
- **Overall Availability**
- **Scalability**
- **System Scalability**

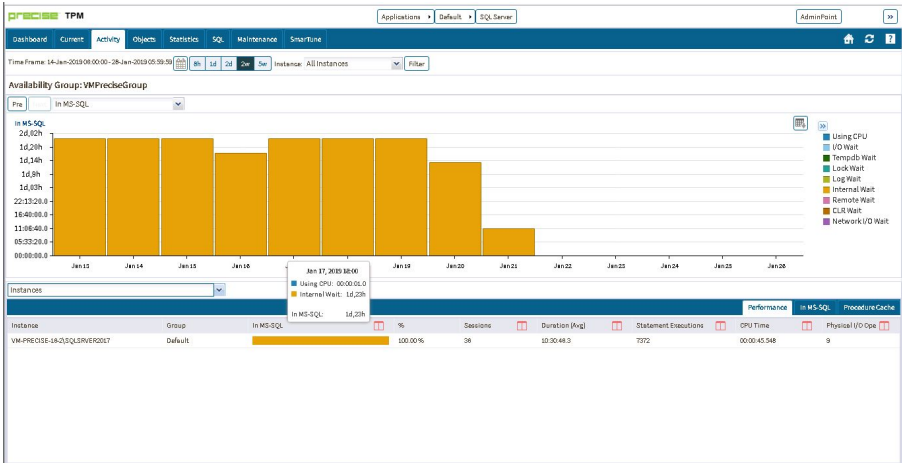
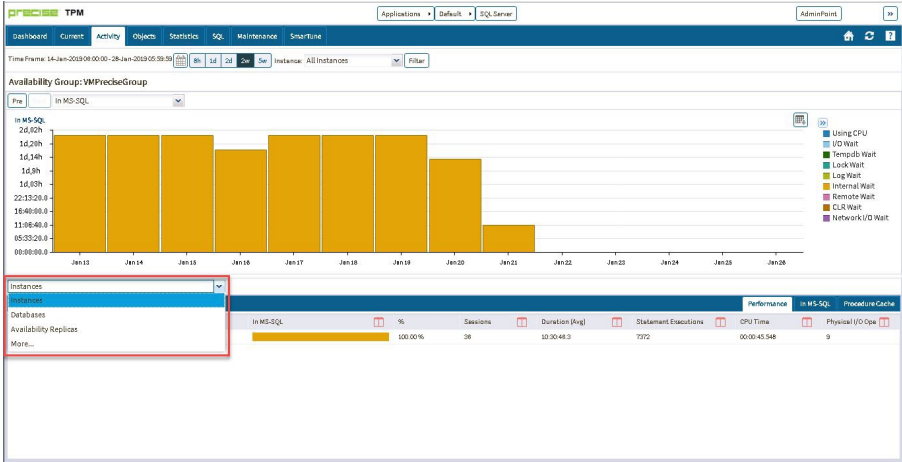
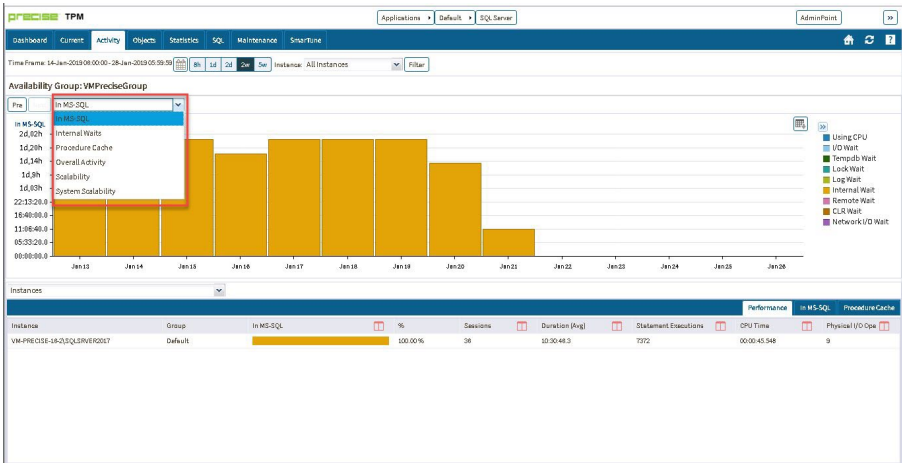
The lower field includes the following options:

- **Instances**
- **Databases**
- **Availability Replicas**

**Previous Precise versions**

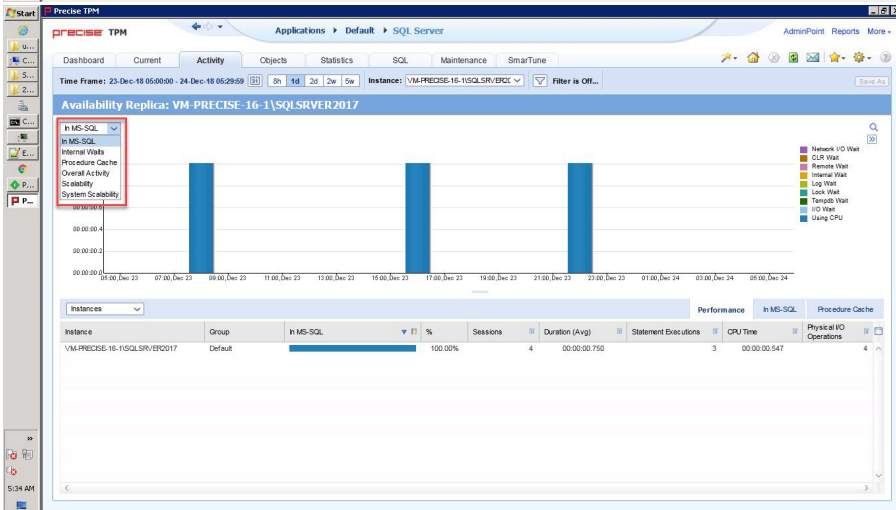
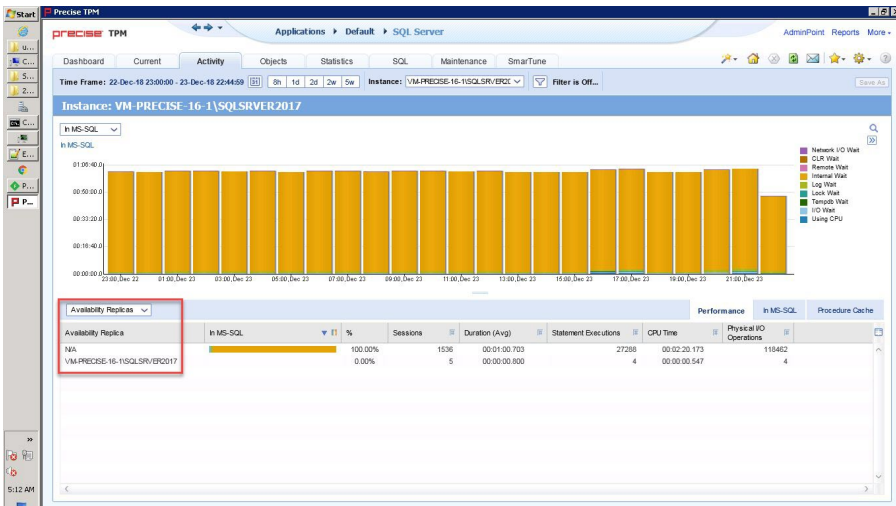


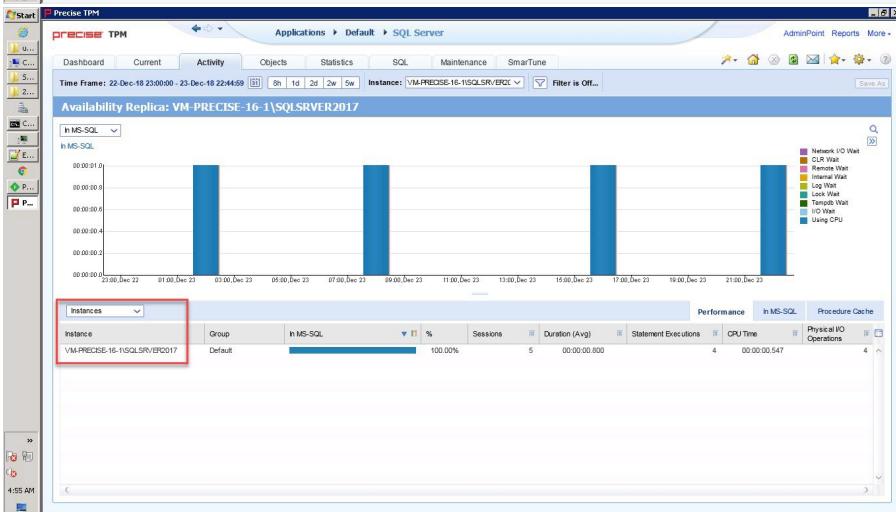
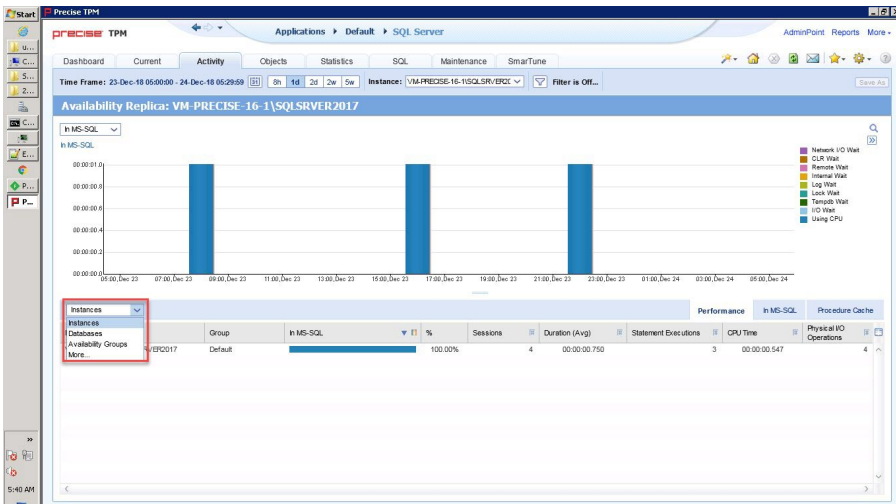
Precise 10.0



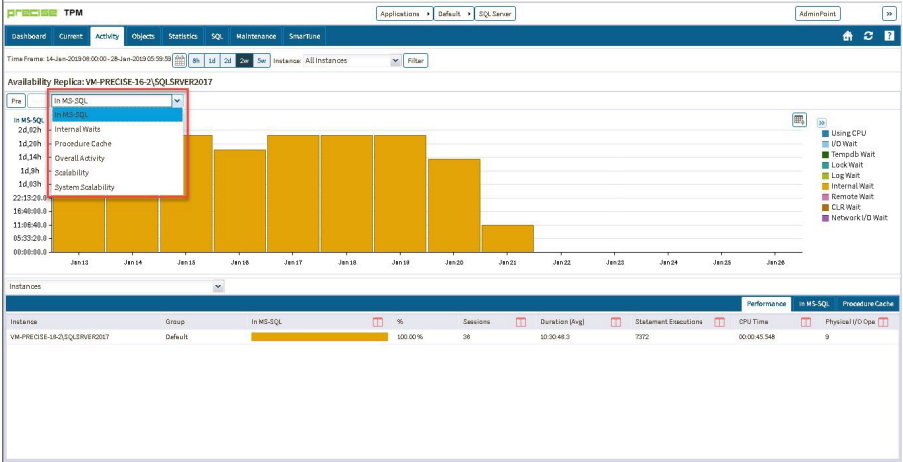
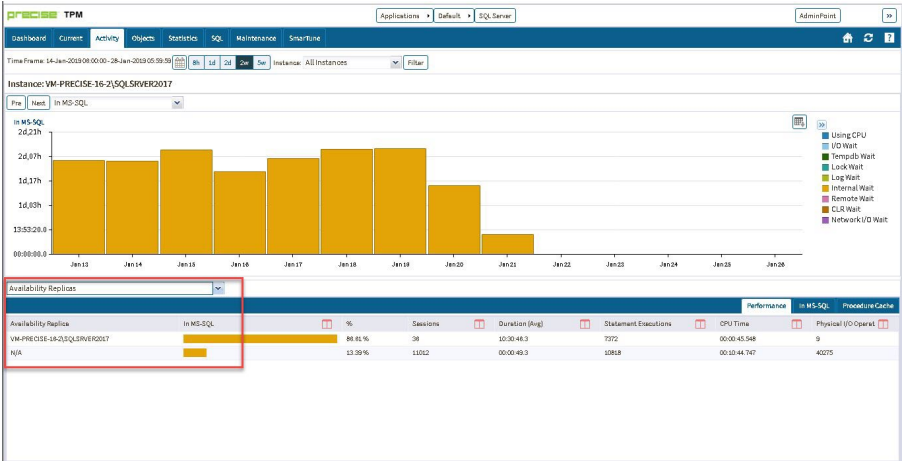
At the **Availability Replica** context, similar options are available at the top and bottom dropdowns.

### Previous Precise versions

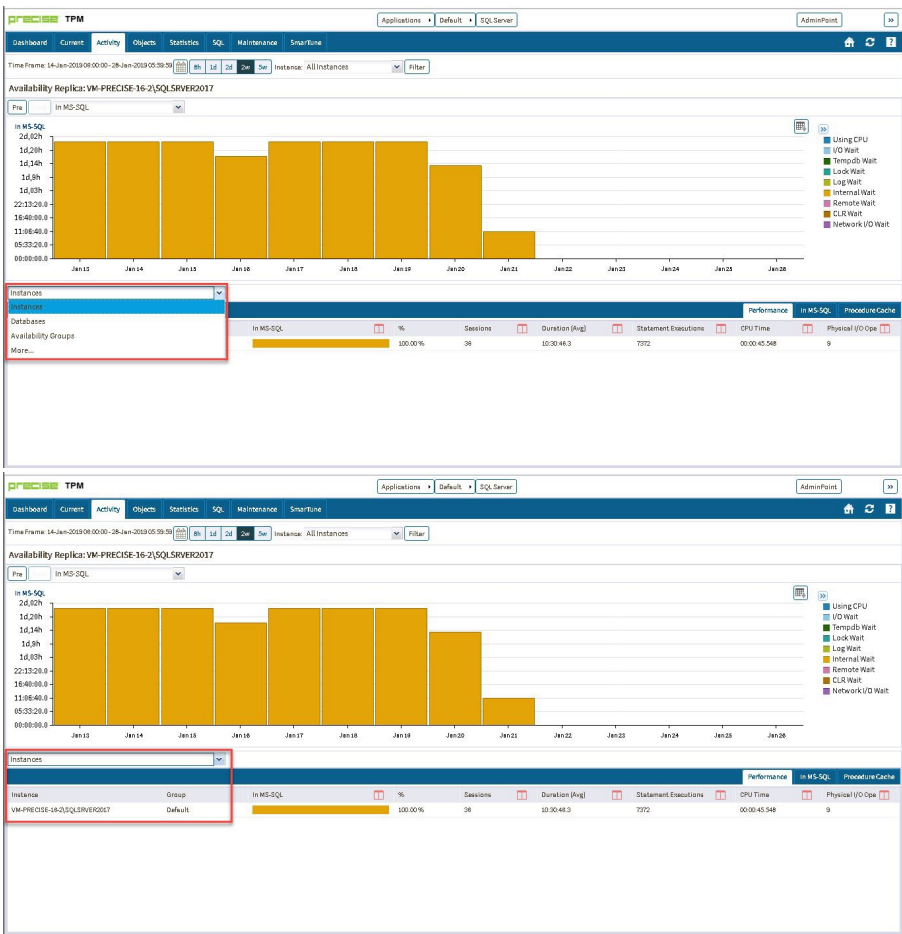




Precise 10.0



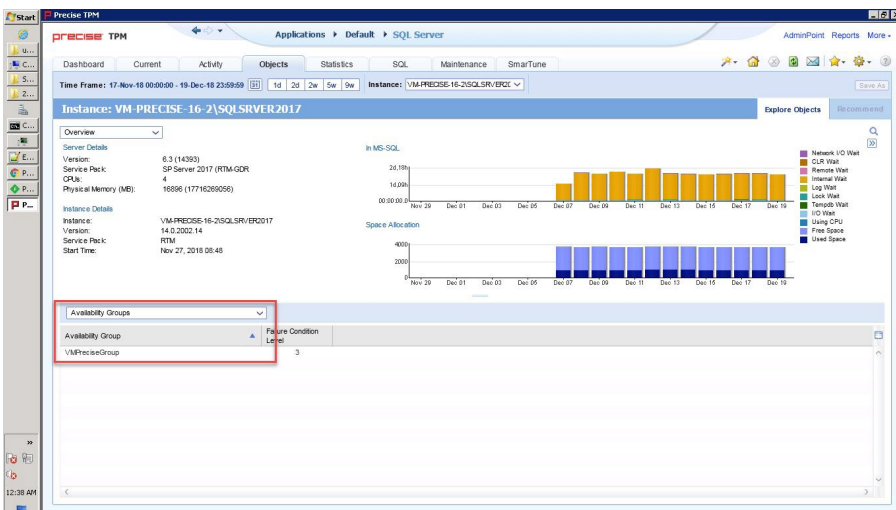
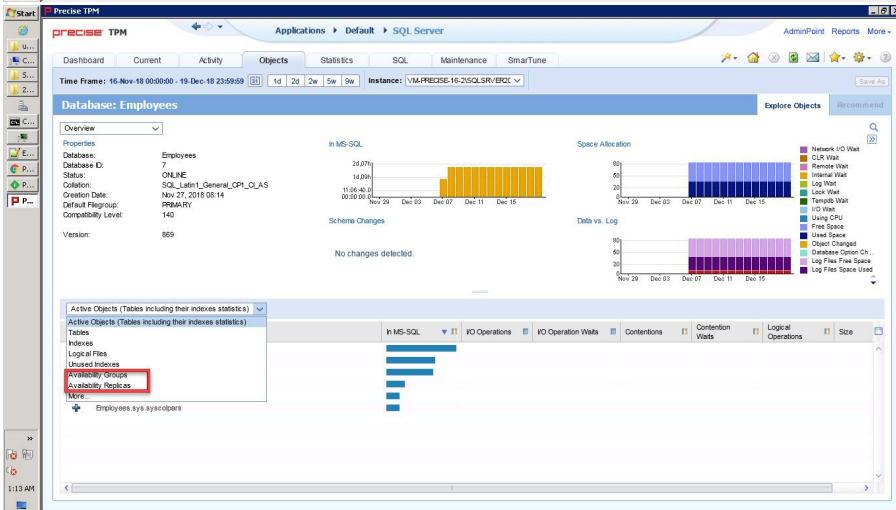
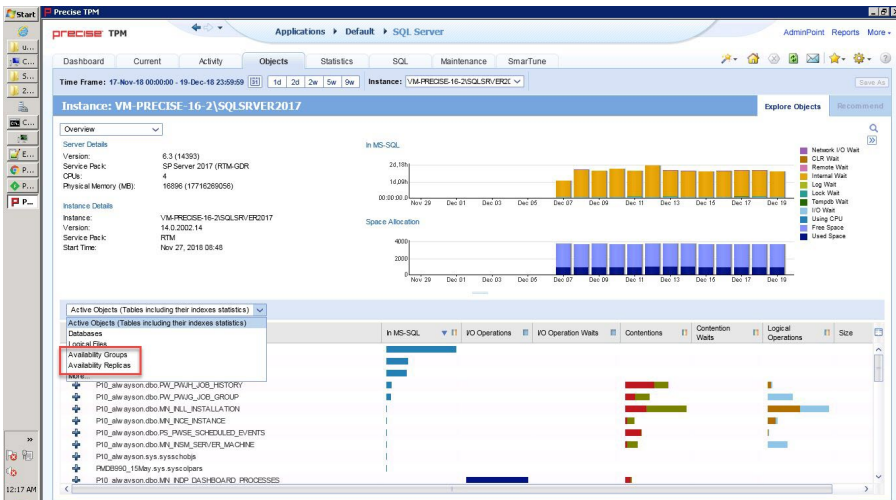




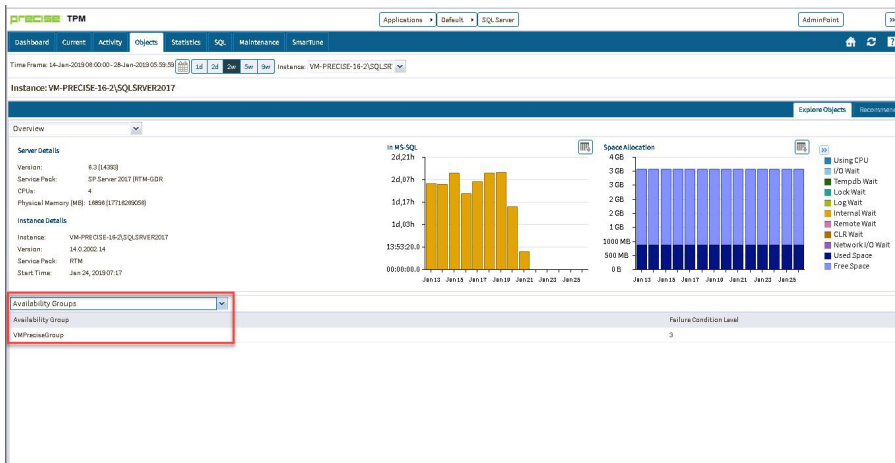
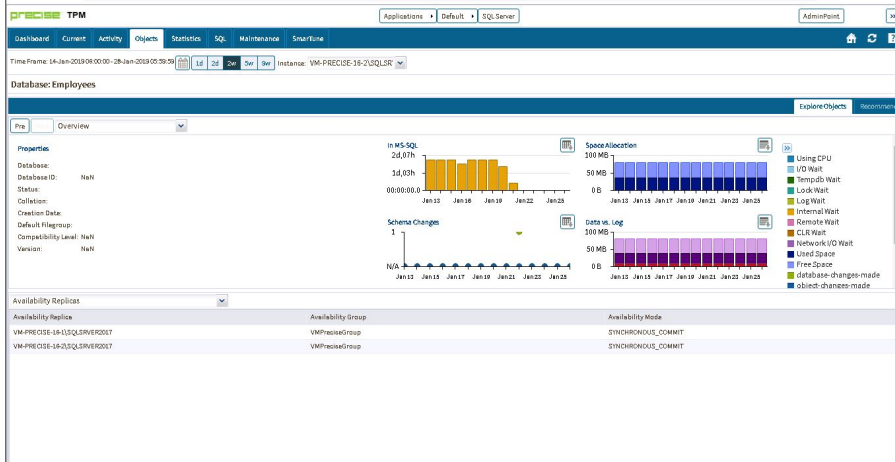
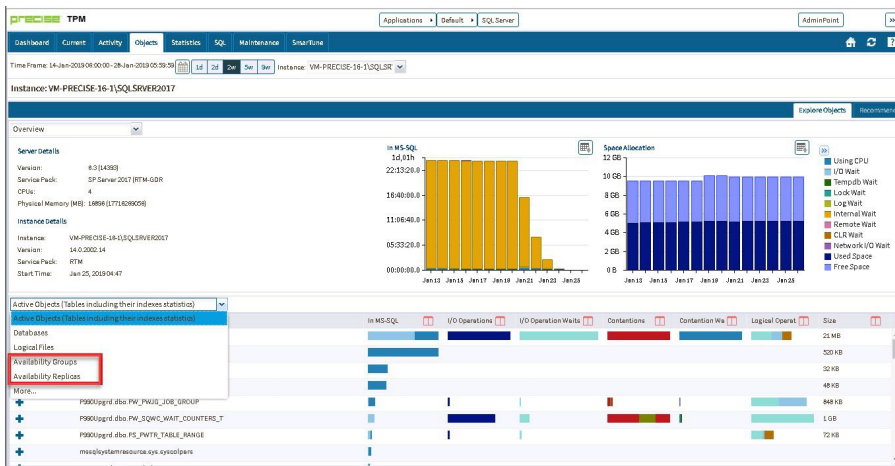
## Objects tab

In the Objects tab, under the **Instance** and **Database** context, **Availability Group** and **Availability Replicas** are included in the lower associated field.

### Previous Precise versions

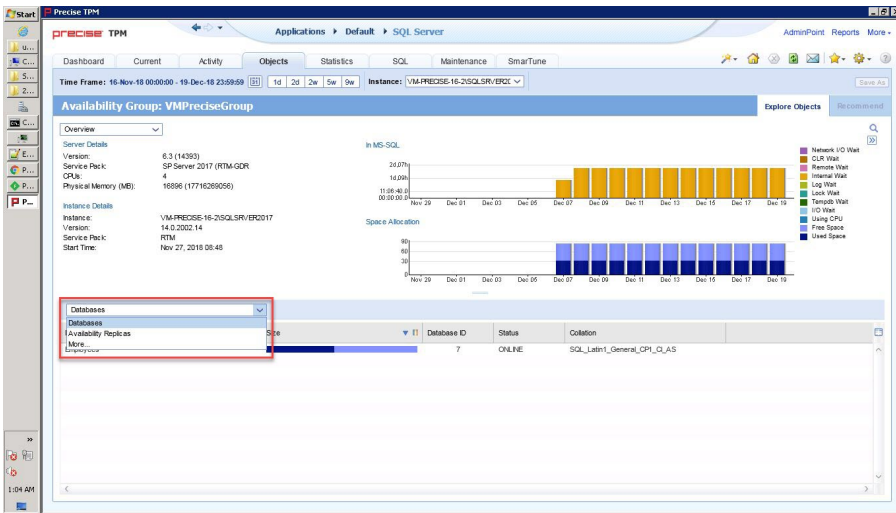


Precise 10.0

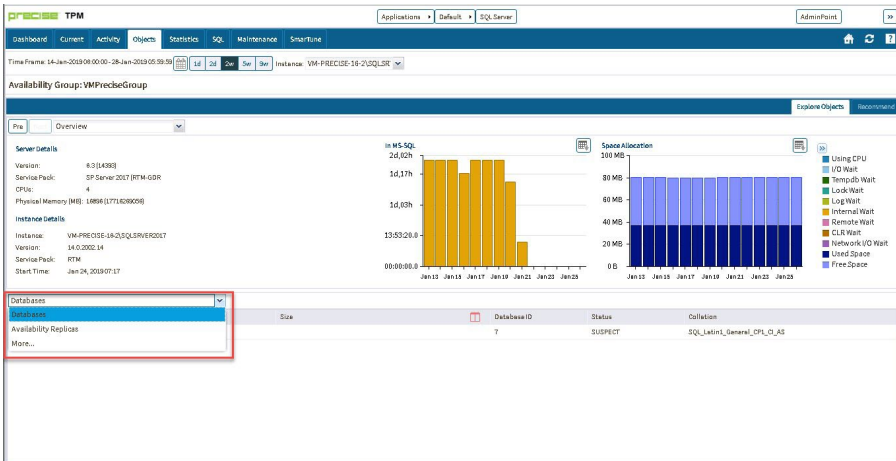


When an Availability Group is clicked on the lower grid, Precise launches the **Availability Group** context. By default, Precise displays an overview in the upper area while the lower area displays a list of databases under this Availability Group.

## Previous Precise versions

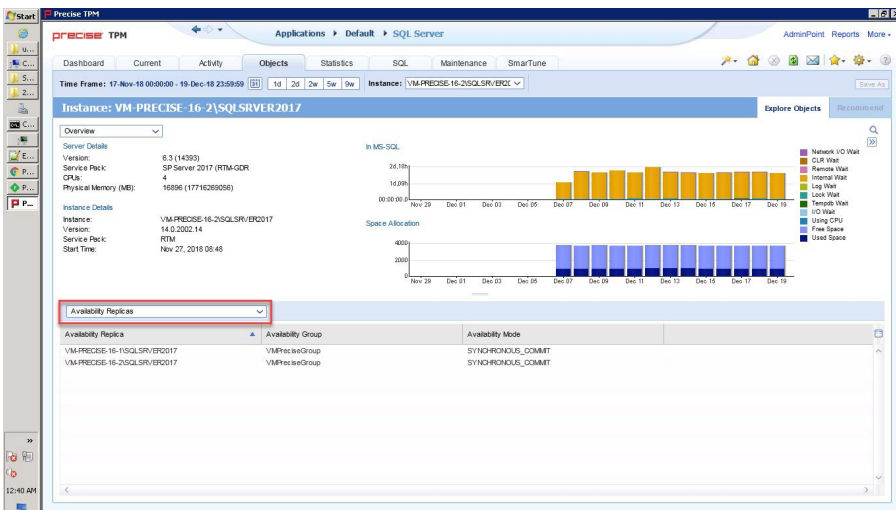


## Precise 10.0

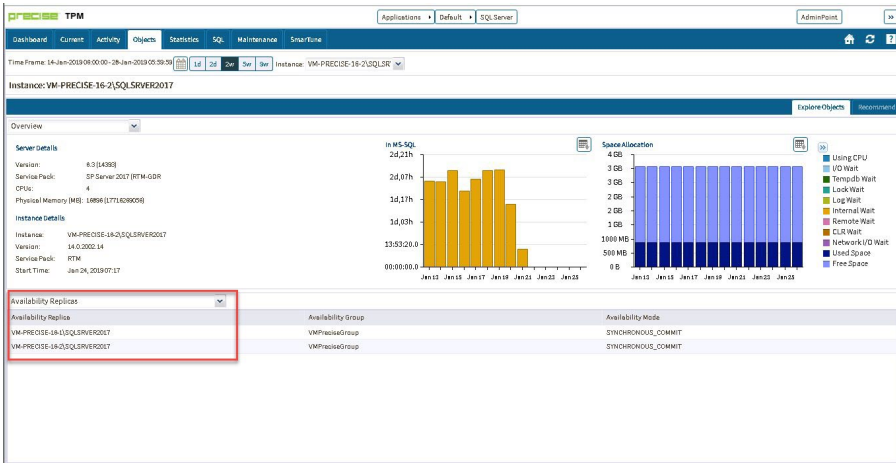


When **Availability Replicas** is selected in the lower field, Precise displays the list of Availability Replicas.

## Previous Precise versions

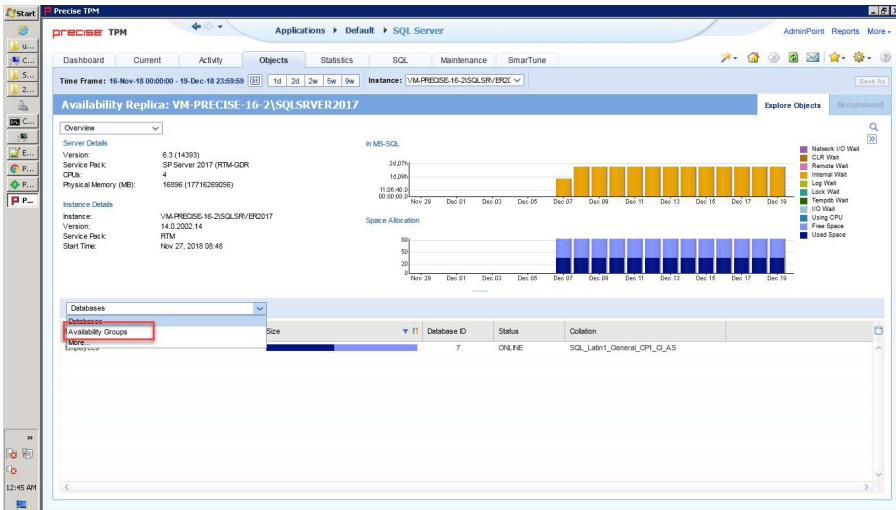


## Precise 10.0



Clicking an **Availability Replica** row launches to the Availability Replica context.

## Previous Precise versions



## Precise 10.0

