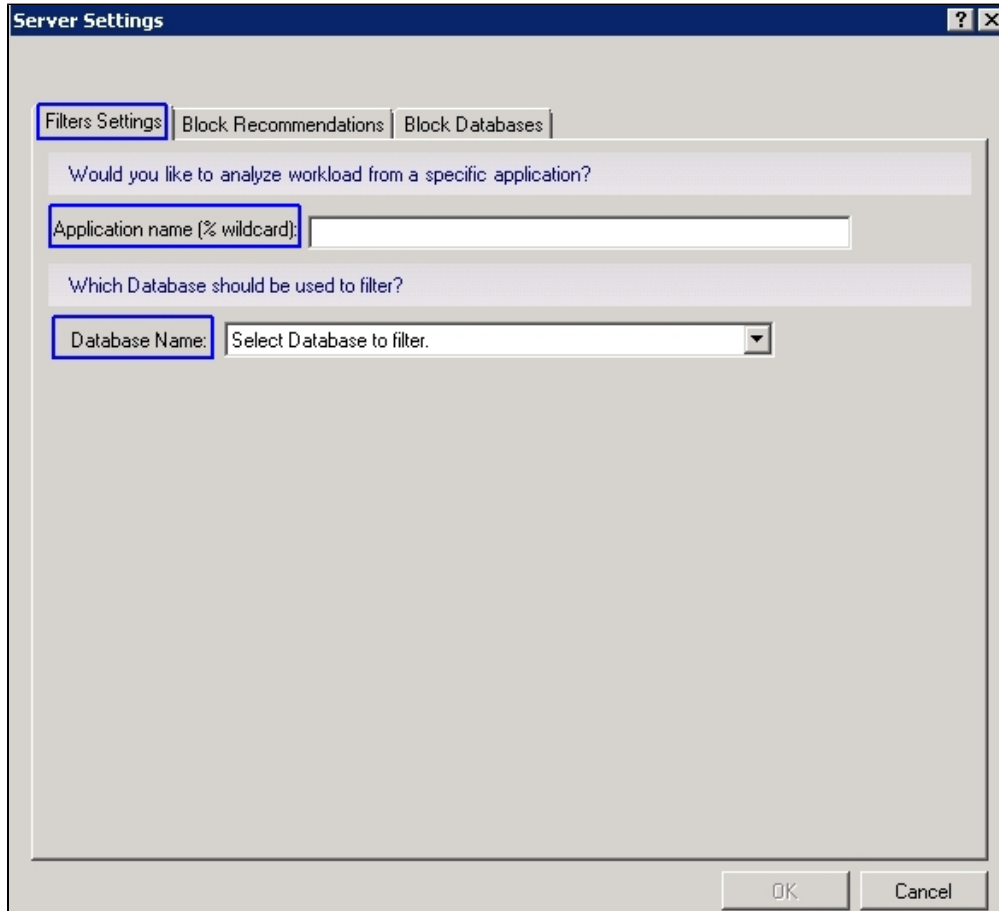


Fine-tune your analysis

SQL Diagnostic Manager provides several options to fine-tune your prescriptive analysis results. You can apply [filters](#) that allow you to focus on a specific application or database. You can also reduce analysis "noise" by blocking [recommendations](#) and [databases](#) for changes that you do not plan to make in your environment.

Apply filters



The screenshot shows the 'Server Settings' dialog box with the 'Filters Settings' tab selected. The dialog has three tabs: 'Filters Settings', 'Block Recommendations', and 'Block Databases'. The 'Filters Settings' tab contains the following elements:

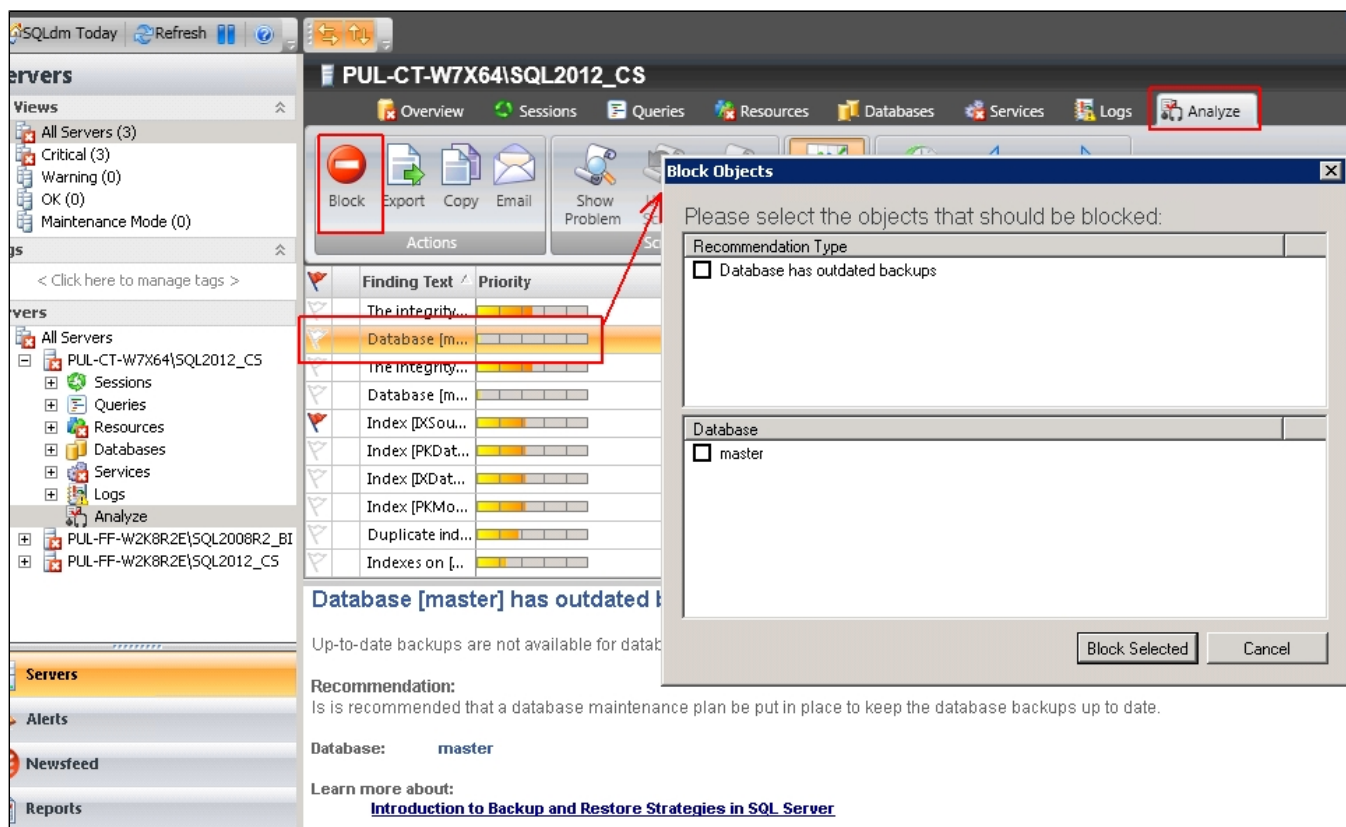
- A question: 'Would you like to analyze workload from a specific application?'
- A text input field labeled 'Application name (% wildcard):'.
- A question: 'Which Database should be used to filter?'
- A dropdown menu labeled 'Database Name:' with the text 'Select Database to filter.'

At the bottom of the dialog are 'OK' and 'Cancel' buttons.

To apply filters in your analysis results:

1. Right-click the appropriate SQL Server instance from the **Servers** tree and select **Properties**.
2. Select **Analysis Configuration** when SQL Diagnostic Manager displays the Monitored SQL Server Properties window.
3. Click **Advanced Settings** to access the Server Settings window.
4. Select the Filter Settings tab.
5. Enter the filter information in the provided fields, using **(%)** as a wildcard.
6. Click **OK**.

Block your recommendations

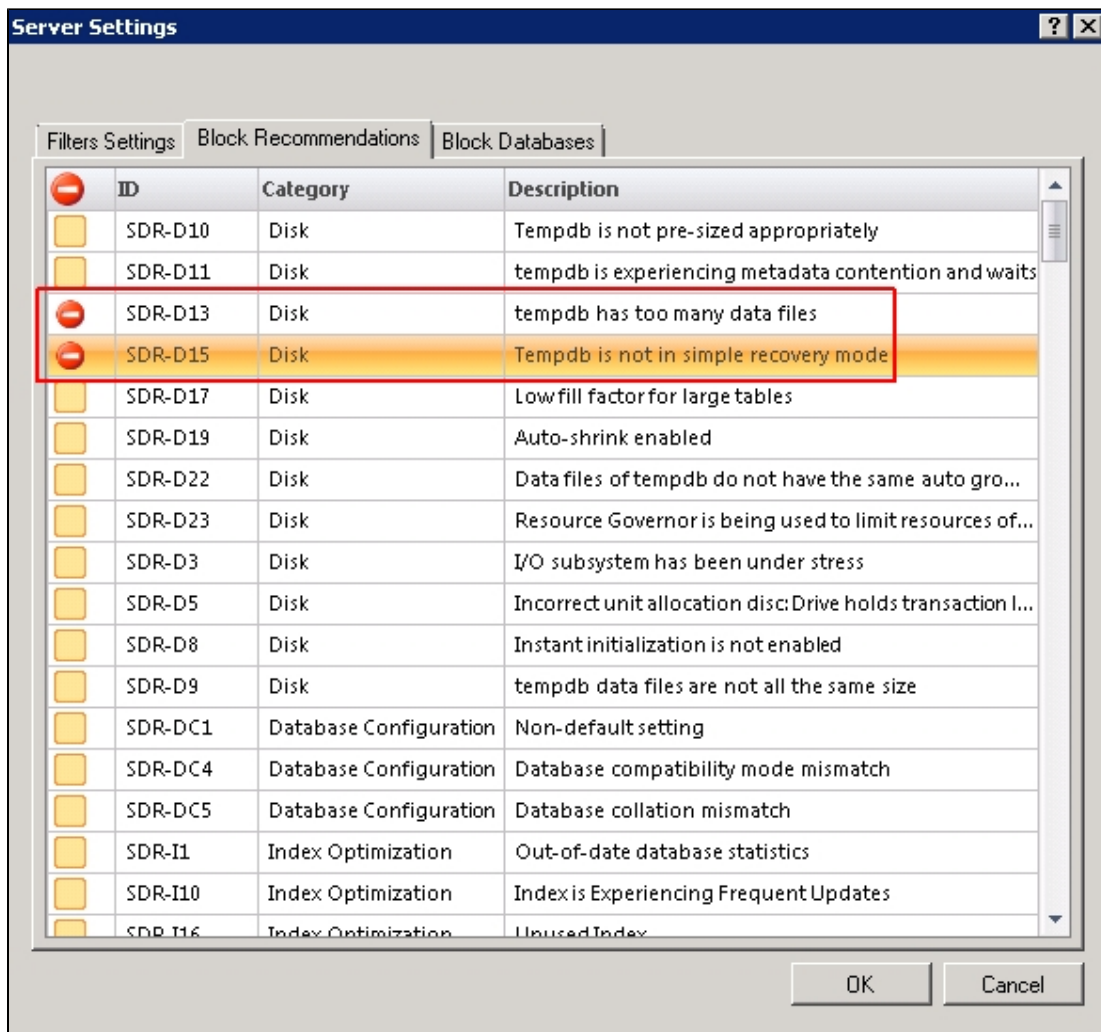


To block recommendations from appearing in your analysis:

1. Select one or more recommendations returned from the analysis.
2. Click **Block** in the **Actions** group of the Analyze tab and the Block Objects screen displays.
3. Check the recommendation box or boxes under Recommendation type.
4. Click **Block Selected**.

To block recommendations from the Server Settings window:

1. Right-click the appropriate SQL Server instance from the **Servers** tree and select **Properties**.
2. Select **Analysis Configuration** when SQL Diagnostic Manager displays the Monitored SQL Server Properties window.
3. Click **Advanced Settings** to access the Server Settings window.
4. Select the Block Recommendations tab.
5. Check the **Block** box next to each of the recommendations you want to block from future analyses.
6. Click **OK**.



Blocking a recommendation removes it from all future analyses results for this registered instance.

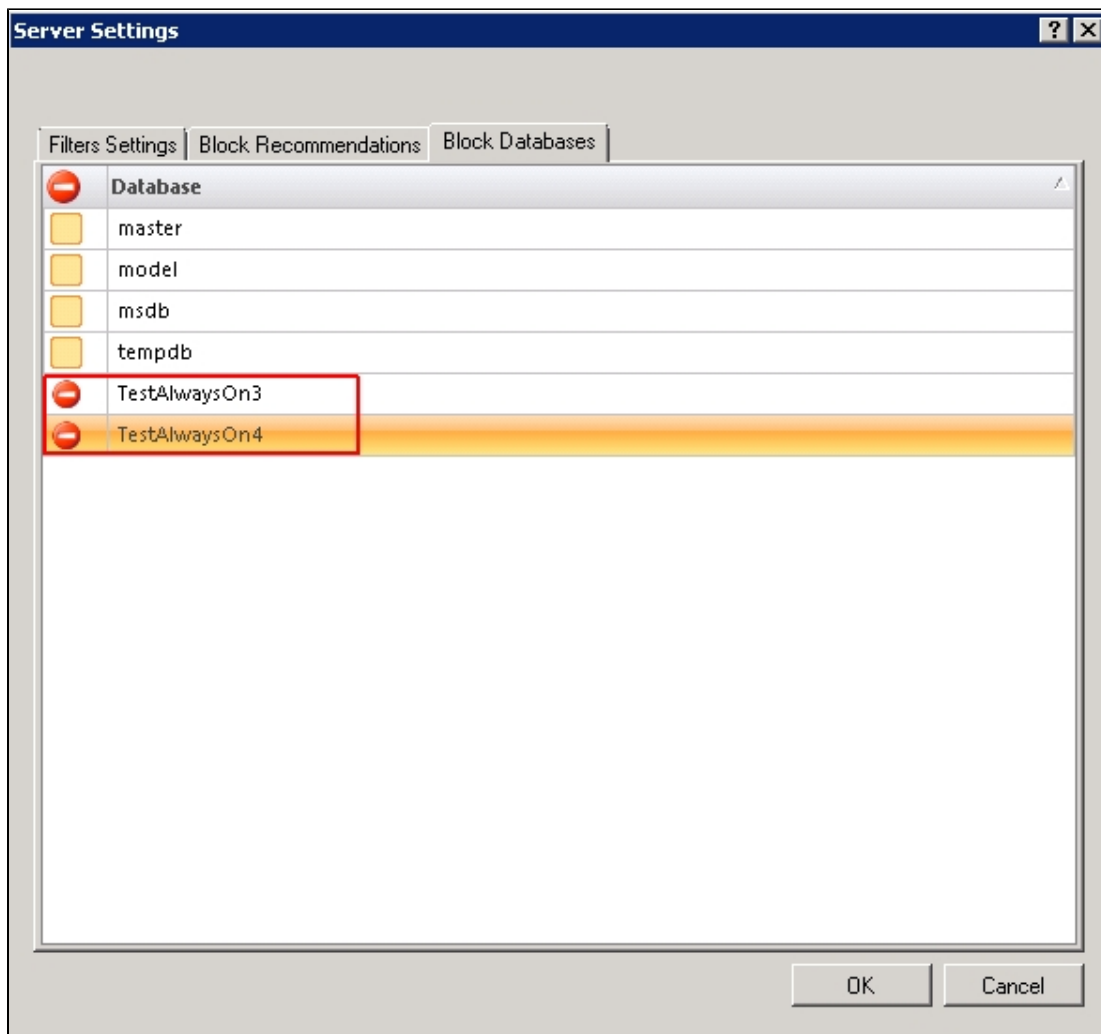
Block databases

To block databases from appearing in your analysis:

1. Access the Block Objects screen by selecting one or more recommendations and clicking **Actions > Block** in the Analyze tab.
2. Check the database box or boxes under Database.
3. Click **Block Selected**.

To block databases from the Server Settings window:

1. Right-click the appropriate SQL Server instance from the **Servers** tree and select **Properties**.
2. Select **Analysis Configuration** when SQL Diagnostic Manager displays the Monitored SQL Server Properties window.
3. Click **Advanced Settings** to access the Server Settings window.
4. Select the Block Databases tab.
5. Check the **Block** box next to each of the databases you want to block from future analyses.
6. Click **OK**.



Blocking a database removes it from all future analyses results for this registered instance.

Unblock your recommendations or databases

To unblock recommendations or databases to include them in your analysis:

1. Right-click the appropriate SQL Server instance from the **Servers** tree and select **Properties**.
2. Select **Analysis Configuration** when SQL Diagnostic Manager displays the Monitored SQL Server Properties window.
3. Click **Advanced Settings** to access the Server Settings window.
4. Select the Block Recommendations tab or the Block databases tab of the Server Settings window.
5. Scroll down the list of blocked recommendations or databases and find the recommendation or database you want to unblock.
6. Clear the **Block** box next to the appropriate recommendation or the **Block** box next to the appropriate database.
7. Click **OK**.

SQL **Diagnostic Manager** identifies and resolves SQL Server performance problems before they happen. [Learn more >](#)

[Idera Website](#)
[Products](#)
[Purchase](#)
[Support](#)
[Community](#)
[About Us](#)
[Resources](#)
[Legal](#)