

Configure database thresholds

The Database Threshold Configuration dialog allows you to set alert thresholds for selected databases on your SQL Server instance. Not all alerts are available for database-specific application. The following alerts include database-specific settings:

- Database Full (Percent)
- Database Full (Size)
- Log Full (Percent)
- Log Full (Size)

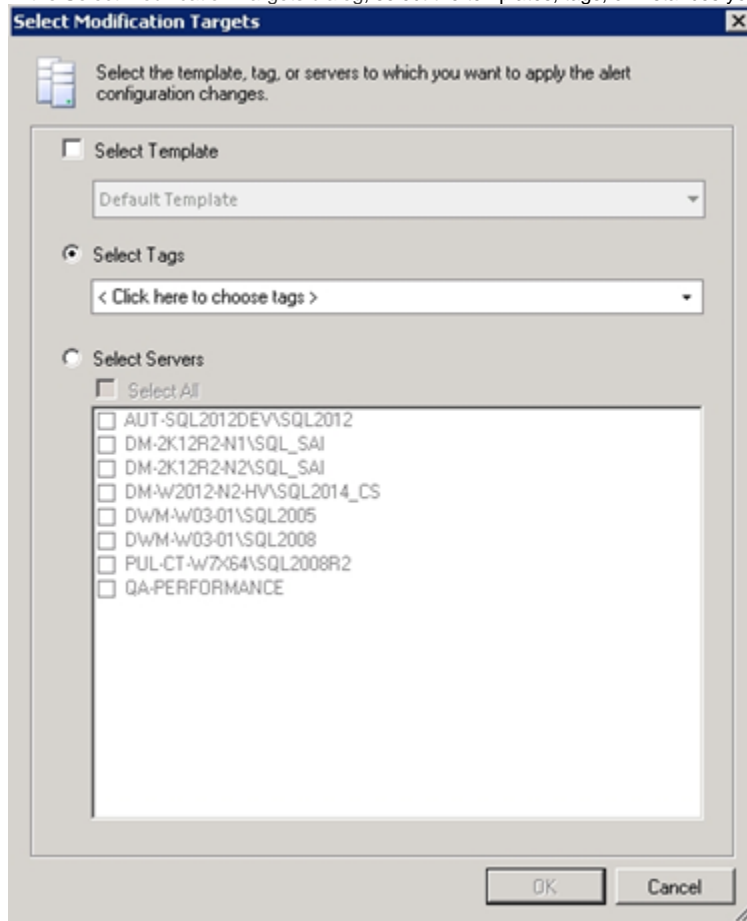
Use the **Advanced** button to set [how and when alerts are raised](#) by limiting the number of alerts and notifications generated.

To add a database for specific alert configuration:

1. Right-click a SQL Server instance in the Servers tree.
2. Select **Configure Alerts**.
3. Select the database-specific metric you want to edit from the list in the **Alert Configuration** window.
4. On the Configuration tab, click **Add**.
5. Select the database from the available drop-down list.
6. Make the appropriate changes to your alert configuration for this database, and then click **OK**. SQL Diagnostic Manager now displays that database in the list on the Configuration tab.
7. Click **OK** to accept your changes.

To edit the alert threshold configuration for a database:

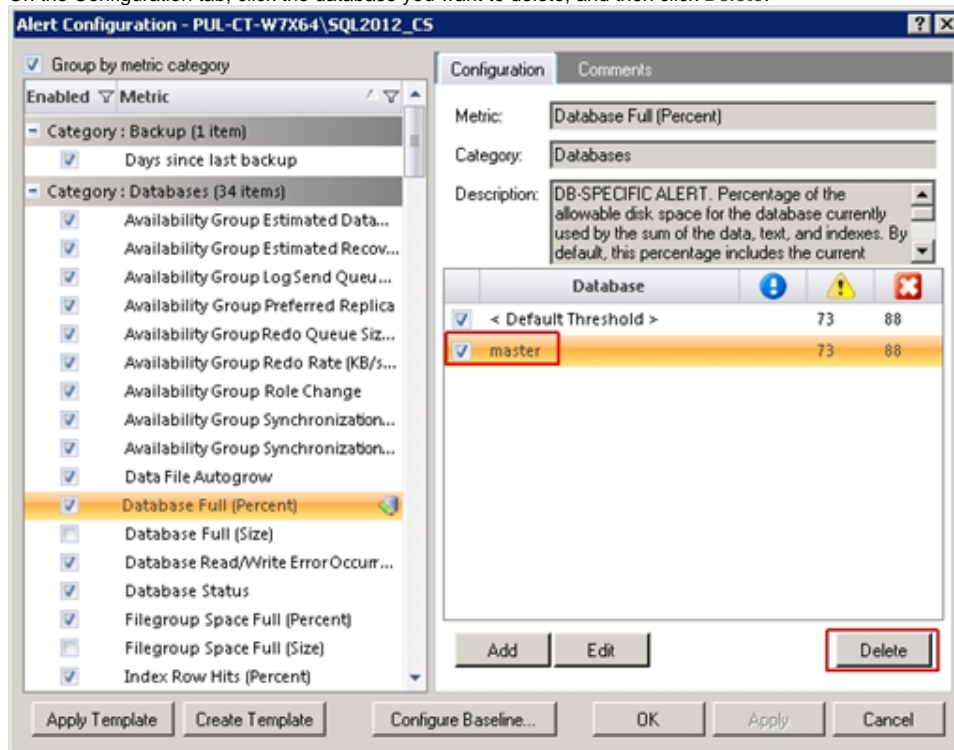
1. Right-click a SQL Server instance in the Servers tree.
2. Select **Configure Alerts**.
3. Select the database-specific metric you want to edit from the list in the **Alert Configuration** window.
4. On the Configuration tab, click the database you want to configure, and then click **Edit**.
5. Change the alert thresholds by moving the arrows to the appropriate levels or by double-clicking the value and typing a new threshold level, and then click **OK**.
6. Click **Apply**.
7. *If you want SQL Diagnostic Manager to replicate your edits to other monitored SQL Server instances, **tags**, or **templates**,* click **Yes**.
8. In the Select Modification Targets dialog, select the templates, tags, or instances you want to include, and then click **OK**.



9. Click **OK** to accept your changes.

To delete the alert threshold configuration for a database:

1. Right-click a SQL Server instance in the Servers tree.
2. Select Configure Alerts .
3. Select the metric from which you want to remove the specific database from the list in the Alert Configuration window.
4. On the Configuration tab, click the database you want to delete, and then click Delete.



5. Click Yes in the confirmation window.
6. Click Apply .
7. If you want to delete the same database from any other SQL Server instances, tags, or templates, click Yes.
8. In the Select Modification Targets dialog, select the templates, tags, or instances you want to apply the same modification, and then click OK .
9. Click OK to accept your changes.

SQL [Diagnostic Manager](#) identifies and resolves SQL Server performance problems before they happen. [Learn more > >](#)

Idera Website	Products	Purchase	Support	Community	About Us	Resources	Legal
-------------------------------	--------------------------	--------------------------	-------------------------	---------------------------	--------------------------	---------------------------	-----------------------