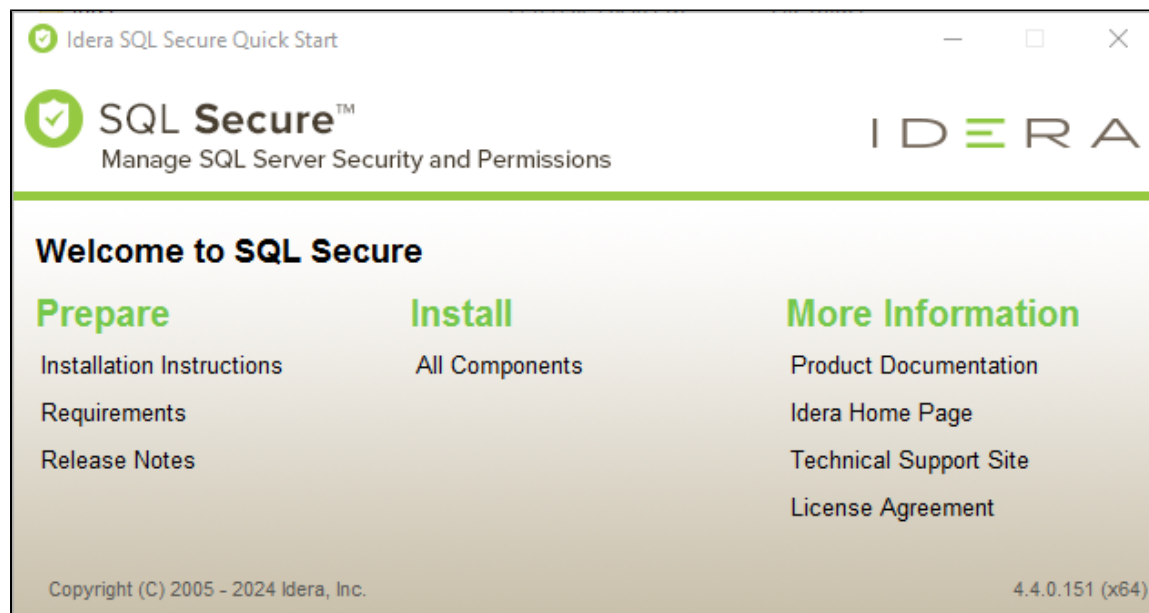


Upgrade to this release

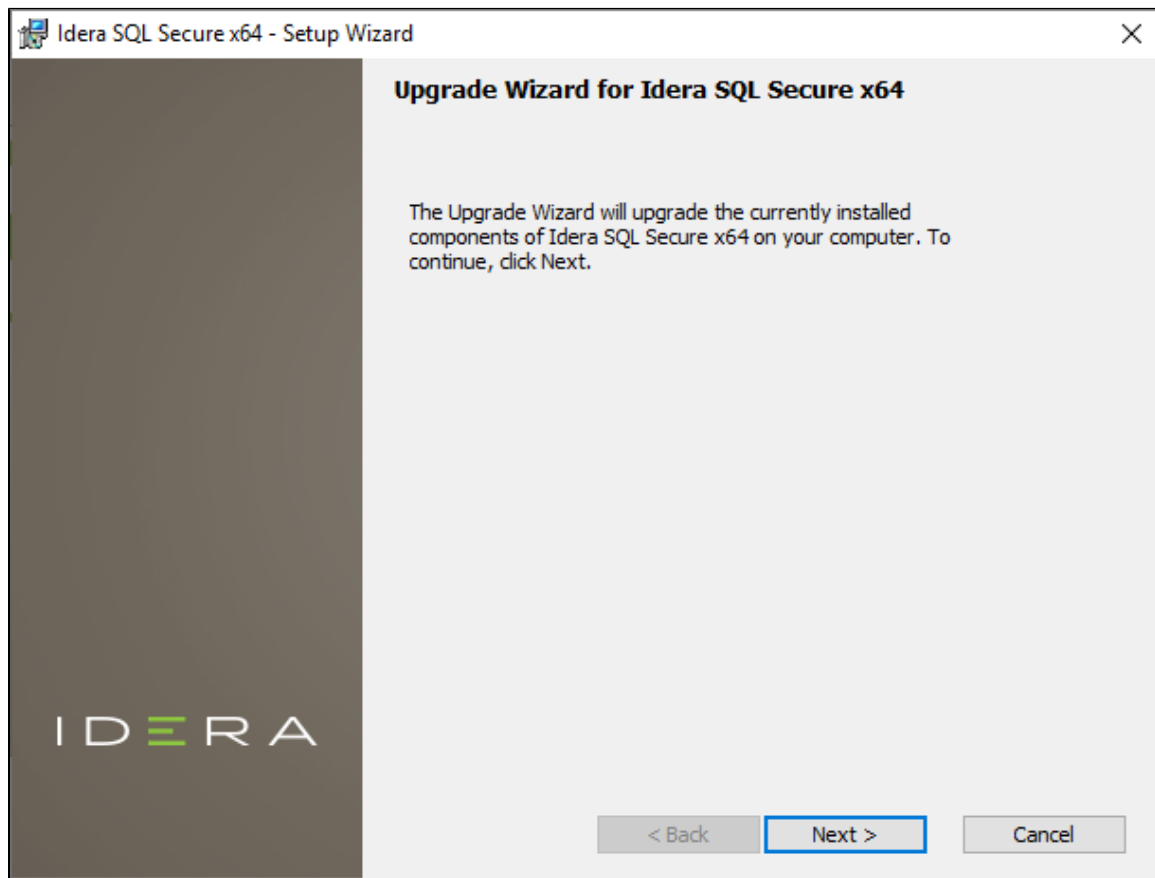
You can easily and quickly upgrade to the latest version of IDERA SQL Secure. Upgrading will not delete or alter any existing snapshots or policies. For more information about this release, see [what's new](#).

To upgrade to the latest version of IDERA SQL Secure:

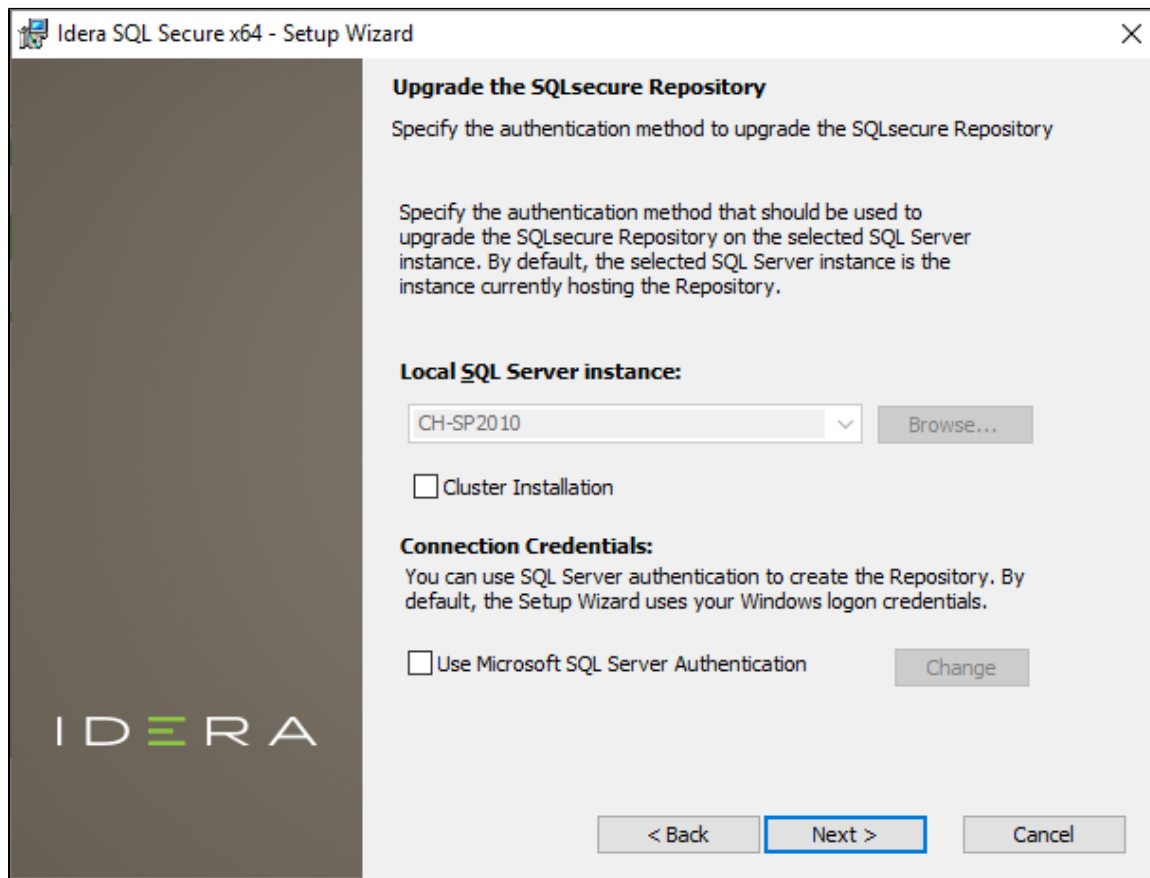
1. Use an administrator account to log onto the computer on which you previously deployed IDERA SQL Secure.
2. Close all open applications.
3. Run `Setup.exe` in the root of the installation kit.
4. Click **All Components** under Install on the **Idera SQL Secure Quick Start** window.



5. An **Upgrade Wizard** will display, click **Next** to continue.



6. On the Upgrade of the SQLsecure Repository Wizard:



To install on a cluster:

If you are installing on a Failover Cluster, check the **Cluster Installation** checkbox.

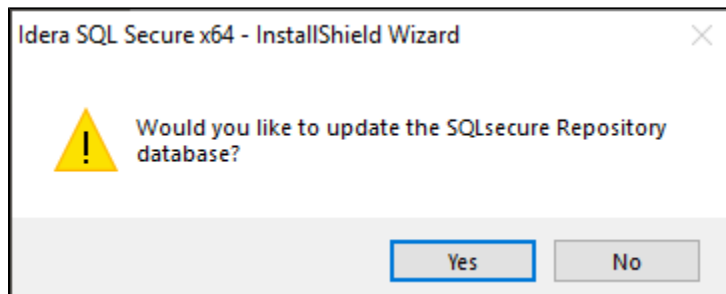
To specify the Connection Credentials:

By default, SQL Secure will connect to the selected SQL Server instance using the credentials of your current Windows login account. For your first install, we recommend using your current login account credentials.

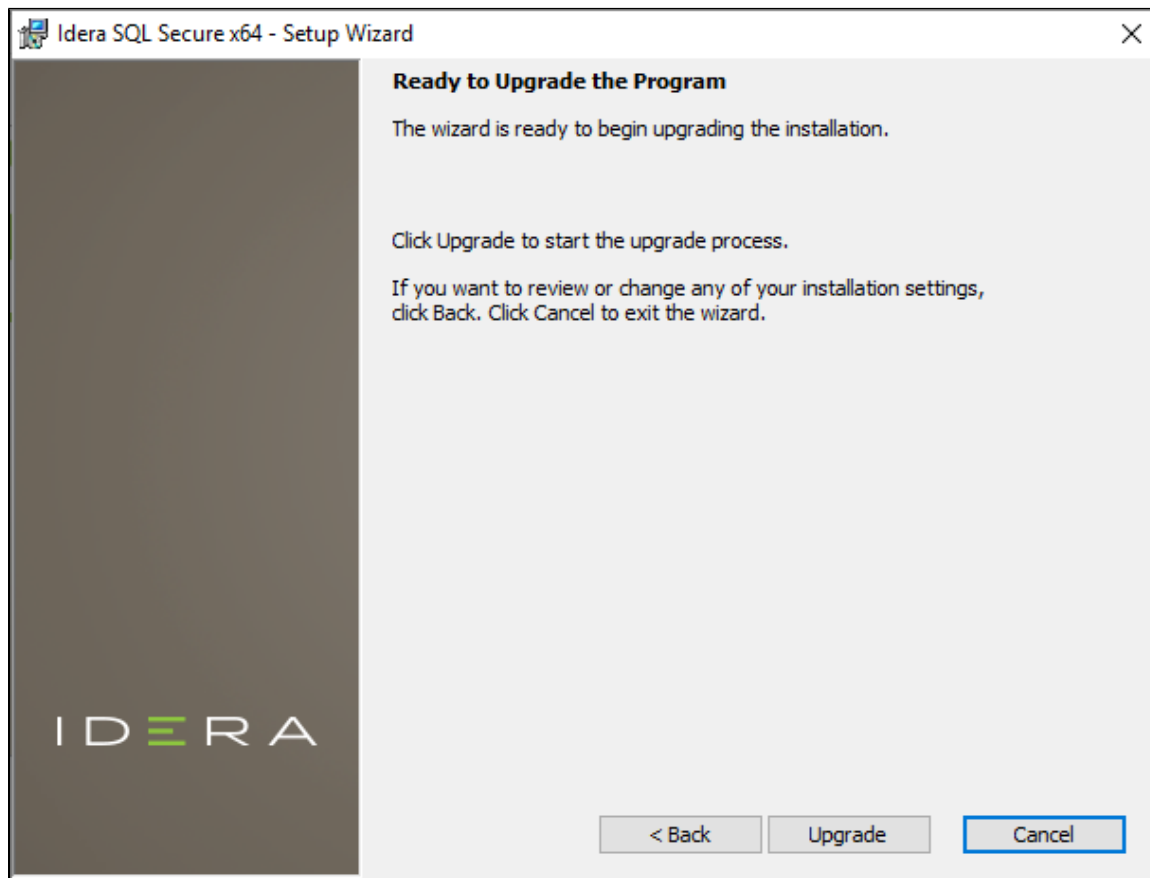
To use a SQL Server login:

- Click **Use Microsoft SQL Server authentication**. A new window for specifying the login credentials opens.
- Specify the credentials of the login with sysadmin privileges on that instance, and then click **OK**.
- Click **Next**.

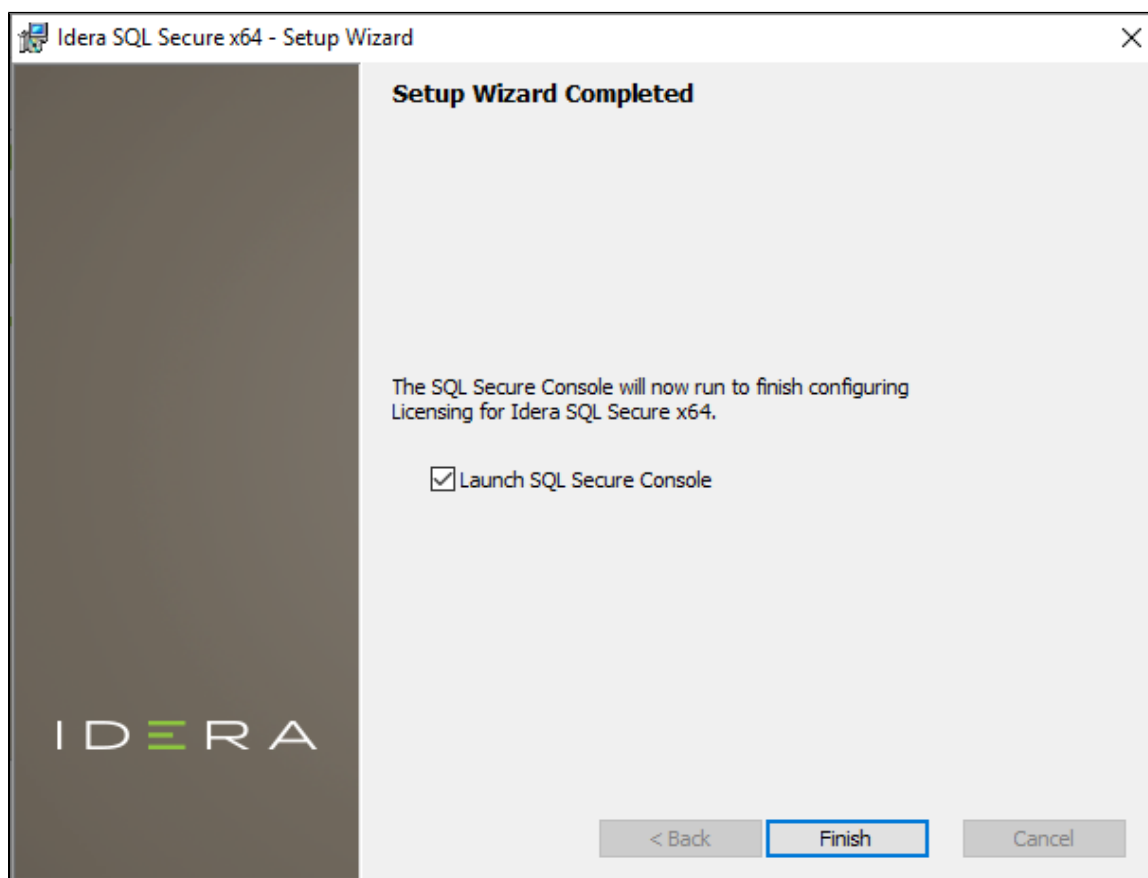
7. An update message will display, click **Yes** to continue.



8. Click **Upgrade** to start the process.



9. Check the **Launch SQL Secure Console** checkbox to run the application after the process completes. Click **Finish** to exit the IDERA SQLsecure Setup Wizard.



i *If you have previously deployed Reports*, use the [Deploy Reports wizard](#) to upgrade your deployment.

i *If your existing policies include security checks that cite OS and SQL Server versions*, you must manually update the related security checks to include the latest releases, such as SQL Server 2017.