

Schedule snapshots

The **Schedule Snapshots** section allows you to choose the best times to collect data from your SQL Server instance.

Register a SQL Server

Schedule Snapshots
Select when audit data (snapshots) should be collected.

Keep snapshots for days before allowing them to be groomed. (1 - 10000 days)


Collection Schedule

☒ **Enable Scheduling**

Occurs every week on Sunday at 3:00:00 AM

[Change...](#)


SQL Server Agent Status

 SQL Secure uses the SQL Server Agent for data collection and grooming. This agent is located on the SQL server hosting the Repository database.

Started

< Back Next > Cancel Help

By default, snapshots are scheduled to run at 3:00 am every Sunday morning (using the local time of the computer hosting the IDERA SQL Secure Repository). The first snapshot is taken at the first scheduled snapshot collection time. You can manually take a snapshot at any time by right-clicking the SQL Server instance in the Explore Permissions view and then selecting **Take Snapshot** from the context menu.

 SQL Secure requires that a user be logged in as the SQL Secure Administrator to view snapshot schedules.

To change the default schedule, click **Change** and select the new time and frequency. When possible, schedule snapshots to run during non-peak or off-hour times.

Schedule Snapshots window actions

Item	Description
Keep snapshot for [number] days before allowing them to be groomed.	Specify the number of days that you want to store snapshots in the SQL Secure Repository. Specify a number between 1 and 10000 days. By default, this value is set to 60 days.

Enable Scheduling	Select this option to enable the audit snapshot schedule. If this option is disabled, you have to take snapshots manually.
Change	<p>Click this button to change the default snapshot collection schedule (3:00 am every Sunday morning). A new window opens where you can specify:</p> <ul style="list-style-type: none"> • The schedule to be Daily, Weekly, or Monthly. • The respective settings are according to the type of schedule selected. For example, if you choose Weekly, you can select which days of the week SQL Secure will collect the data and how frequently the schedule will run, for instance, every 1 or 2 weeks. • The specific time of the day when the information will be collected, its frequency, and the Starting and Ending dates for this schedule option.

SQL Server Agent Status

Additionally, this section of the wizard allows you to see the status of your SQL Server Agent. Take into account that SQL Secure uses the SQL Server Agent for data collection and grooming. This Agent is located in the SQL Server hosting the Repository Database. You can see in this section whether the Agent status is Started or Stopped.

Click **Next** to go to the following section to [Configure your email notifications](#).

View snapshot properties

To view the properties of a specific snapshot, go to the **Explore Permissions** view, expand the SQL Server from which the snapshot was taken, right-click the respective snapshot, and select **Properties** from the context menu. For more information about what properties you can see, go to [View Snapshot Properties](#).

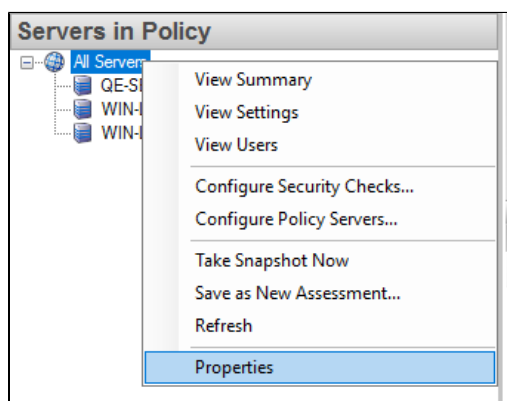
In this same view, you can also see the list of snapshots and baselines for a specific SQL Server. To see this information select your required server from the Audited SQL Servers tree and SQL Secure displays an **Audit History** section on the respective **Server Summary**. For more information about this view, go to [View single server summary](#).

Schedule snapshots at a policy level

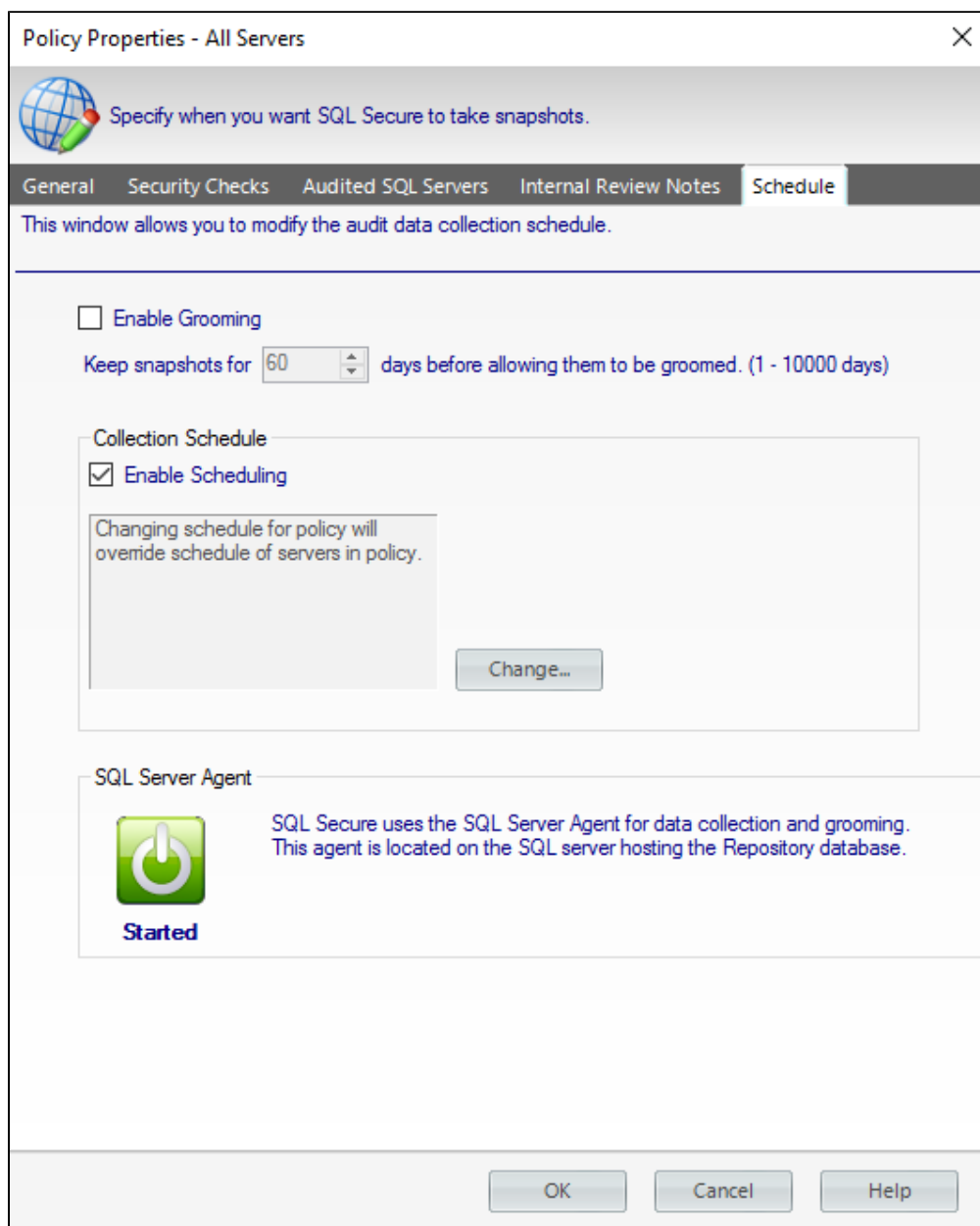
SQL Secure allows you to schedule snapshots for all servers within a policy by using the following wizards.

Policy Properties wizard

You can schedule a snapshot at the policy level by right-clicking the policy and selecting **Properties**.



When the Policy Properties wizard opens, go to the Schedule tab and configure the settings to your preference.



Schedules set at the policy level overwrite any existing schedule settings set at the server level and vice versa.

Create Policy Wizard

Configure the audit data collection in the [Schedule Snapshot](#) page of the wizard.

[IDERA](#) | [Products](#) | [Purchase](#) | [Support](#) | [Community](#) | [Resources](#) | [About Us](#) | [Legal](#)