

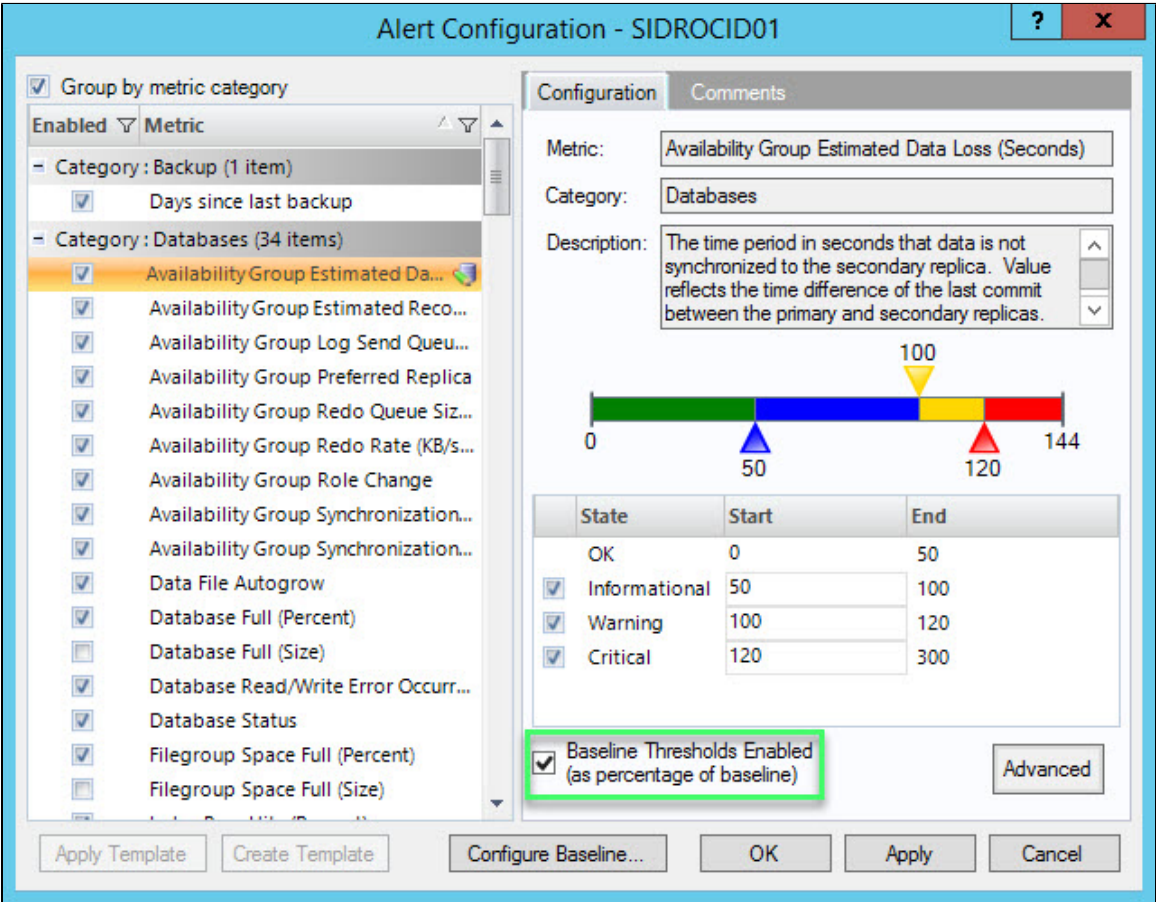
# Enable baseline thresholds

SQL Diagnostic Manager allows users to enable alerts when the following metrics are outside their established baseline thresholds:

- Availability Group Estimated Data Loss (Seconds)
- Availability Group Estimated Recovery Time (Seconds)
- Availability Group Log Send Queue Size (KB)
- Availability Group Redo Queue Size (KB)
- Availability Group Redo Rate (KB/sec)
- Availability Group Synchronization Performance (Seconds)
- SQL Server Data Used (Percent)
- SQL Server Log Used (Percent)
- OS Average Disk Queue Length (Count)
- OS Disk Time (Percent)
- OS Memory Usage (Percent)
- OS Paging (Per Second)
- OS Privileged Time (Percent)
- OS Processor Queue Length (Count)
- OS Processor Time (Percent)
- OS User Time (Percent)
- Page Life Expectancy
- Procedure Cache Hit Ratio
- SQL Server CPU Usage (Percent)
- SQL Server Memory Usage (Percent)
- Non-Distributed Transactions (Count)
- Unsubscribed Transactions (Count)
- Unsubscribed Transactions (Seconds)
- Blocked Sessions (Count)
- Client Computers (Count)
- Oldest Open Transaction (Minutes)
- SQL Server Response Time (Milliseconds)
- User Connections (Percent)
- VM CPU Usage (Percent)

## To enable baseline thresholds:

1. Right-click a monitored SQL Server instance and select **Configure Alerts**.
2. In the Alert Configuration window, click the **Baseline Thresholds Enabled (as percentage of baseline)** check box.



SQL Diagnostic Manager for SQL Server performance monitoring, alerting, and diagnostics for SQL Server.

[IDERA](#) | [Products](#) | [Purchase](#) | [Support](#) | [Community](#) | [Resources](#) | [About Us](#) | [Legal](#)