

# Windows Server 2008 clustered environment

The following instructions guide you through the installation of SQL Diagnostic Manager in a Windows Server 2008 based clustered environment.

## Things to consider before you install SQL Diagnostic Manager in a clustered environment

- Create a separate cluster resource group to host SQLDM services. A separate group allows the SQLDM services to fail without causing other resources in the group to failover.
- Before you create this separate cluster resource group, gather a dedicated IP, NetBIOS name, and a dedicated disk for the cluster resource group.
- SQLdm Collection, SQLdm Management, SQLdm Predictive Analytics, and SQLdm Rest services can run as generic services on your newly-created cluster resource group.

## Install SQLDM Services on Cluster Nodes

SQL Diagnostic Manager must be installed on each node within the cluster and configure the services as described on the following page, [Install SQL Diagnostic Manager on a node](#).

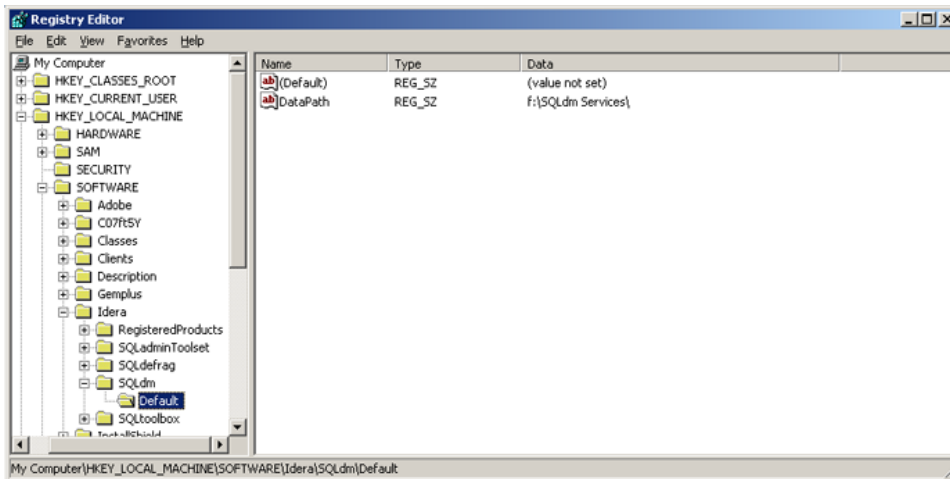
## Configure the Cluster Resource Group

Cluster Resource Group settings must be modified to allow SQL Diagnostic Manager to recognize the cluster nodes.

### To configure the Cluster Resource Group:

1. Select a disk that is configured in the Cluster Resource Group and create a folder on that disk that you want to use to hold local data for the services
2. On the primary node, edit the registry and add a new key named Default to the key `\\SOFTWARE\\Idera\\SQLdm`. In this key add a string value called **DataPath**. Set its value to the full path to the data directory created in step 1 (as shown in the image at the end of the steps)
3. In the Failover Cluster Management tool, right-click on **Services and Applications** and select **Configure a Service or Application**
  - Provide a name for the service
  - Select **Generic Service**
  - Select the SQLdm Management Service
  - Enter the network name and IP address for the services
  - Select the clustered storage that hosts the path defined in step 1
  - Skip the Registry Replication
  - Verify the settings and click **Next** to complete the wizard
  - Repeat step 3 for the remaining SQLdm services.
4. In **Services and Applications**, click the newly created service name in the Other Resources section and then on the SQLdm Management service and take it offline
5. Select the SQLdm Management Service from the list of resources
6. Select **Next** and **Finish** to exit the wizard
7. In **Services and Applications**, right-click on the newly created service and then on the **SQLdm Management Service** and select **Properties**
  - On the General tab, select **Use Network Name for computer name**
  - On the Dependencies tab, add the name of service and disk, and then click **Apply**
  - On the Registry Replication tab, if blank, add `SOFTWARE\\Idera\\SQLdm\\Default\\`
8. In **Services and Applications**, right-click the newly created service and select **Add a Resource and Generic Service**
9. Select the SQLdm Collection Service from the list of resources
10. Select **Next** and **Finish** to exit the wizard
11. In **Services and Applications**, right-click on the newly created service and then on the **SQLdm Collection Service** and select **Properties**
  - On the General tab, select **Use Network Name for computer name**
  - On the Dependencies tab, add name of service and disk, and then click **Apply**
  - On the Registry Replication tab, add `SOFTWARE\\Idera\\SQLdm\\Default\\`
12. In **Services and Applications**, right-click the newly created service and select **Add a Resource and Generic Service**
13. Select the SQLdm Predictive Analytics service from the list of resources
14. Select **Next** and then **Finish** to exit the wizard
15. In **Services and Applications**, click the newly-created service and then on the **SQLdm Predictive Analytics service** and select **Properties**
  - On the General tab, select **Use Network Name for computer name**
  - On the Dependencies tab, add the name of the service and disk, and then click **Apply**
  - On the Registry Replication tab, if blank, add `SOFTWARE\\Idera\\SQLdm\\Default\\`
16. In **Services and Applications**, right-click the newly created service and select **Add a Resource and Generic Service**.

17. Select the SQLdm Rest service from the list of resources
18. Select **Next** and then **Finish** to exit the wizard
19. In **Services and Applications**, click the newly-created service and then on the **SQLdm Rest service** and select **Properties**
  - On the General tab, select **Use Network Name** for computer name
  - On the Dependencies tab, add the name of the service and disk, and then click **Apply**
  - On the Registry Replication tab, if blank, add `SOFTWARE\Idera\SQLdm\Default\`
20. In Windows Services, bring the SQLdm Management service resource online
21. In Windows Services, bring the SQLdm Collection service resource online
22. In Windows Services, bring the SQLdm Predictive Analytics service resource online
23. In Windows Services, bring the SQLdm Rest service resource online
24. On the active node on which you installed the SQLdm services, use the Management Service Configuration wizard (**Start > All Programs > IDERA > SQL Diagnostic Manager > Tools > Management Service Configuration Wizard**) to force the services to re-register
25. Test the configuration from the Management Service Configuration wizard before finishing the wizard



## Complete the Cluster Configuration in SQL Diagnostic Manager

Start the SQLDM Desktop Client and select SQLDM Repository. If the SQLDM Repository is clustered make sure to use the virtual server name for the SQL Server hosting the SQLDM Repository.